

# TRIAD DISTRIBUTOR DIVISION



## MINIATURES

### †† JAF SERIES — Hermetically Sealed

Type No.	Primary Impedance	Secondary Impedance	Max. Level-DBM	Freq. Resp.	** MTG.
JAF-1‡	600/250/50	50000	0	60-15000	AF
JAF-2‡	600/250/50	250000	0	100-15000	AF
JAF-3	600/250/50	60000 CT.	0	60-15000	AF
JAF-5‡	30/12/4	50000	0	50-15000	AF
JAF-11	15000	50000	10	60-15000	AF
JAF-12	15000	60000 CT.	10	250-15000	AF
JAF-13	15000 (3 Ma.)	95000 CT.	10	250-15000	AF
JAF-14‡	200	½ megohm	10	350-5000	AF
JAF-15	15000	1 megohm	10	300-3000	AF
JAF-21	15000	600/250/50	10	60-15000	AF
JAF-22	15000 (3 Ma.)	600/250/50	10	350-7000	AF
JAF-23	20000 CT.	600/250/50	10	60-15000	AF
JAF-24	10000 CT.	2000 CT.	10	50-20000	AF
JAF-25	12000CT.(2 Ma.)	600 CT./150	12	50-15000	AF
JAF-26	50000CT.(.5Ma.)	600 CT./150	10	100-15000	AF
JAF-31‡	600/250/50	600/250/50	10	60-15000	AF
JAF-32	1500 CT. (2Ma.)	600 CT./150	14	20-20000	AF
JAF-33‡	5000 CT.	5000 CT.	10	60-15000	AF
JAF-34	500 CT.	500 CT./125	14	50-20000	AF
JAF-35	600 CT.	2000 CT./500	14	50-20000	AF
JAF-101	50 h.-.75 Ma.				AF
JAF-102	6 HY.—3 MA. or 4 HY.—6 Ma.				

### SUB-MINIATURE AUDIO — Hermetically Sealed

Type No.	Primary Impedance	Secondary Impedance	DC Res. Ohms (Approx.)		** Case
			Pri.	Sec.	
JZ-1	600/250/50	60000	350	4100	JZ
JZ-5	30/12/4	50000	11.5	3800	JZ
JZ-7	30/12/4	1000	12	480	JZ
JZ-13	15000 (1. Ma.)	135000 CT.	1150	4400	JZ
JZ-15	20000 (.5 Ma.)	1200/600/100	2700	350	JZ
JZ-25	10000 (1 Ma.)	200	1500	120	JZ
JZ-26	1000 (5 Ma.)	50	355	30	JZ

### SUB-MINIATURE AUDIO — Open Frame

Type No.	Primary Impedance	Secondary Impedance	DC Res. Ohms (Approx.)	
			Pri.	Sec.
TZ-1	600/250/50	60000	350	4100
TZ-2XT	200 CT.	200000	35	5000
TZ-5	30/12/4	50000	6	3500
TZ-7	30/12/4	1000	5	480
TZ-13	15000 (1 Ma.)	135000 CT.	985	4400
TZ-15	20000 (.5 Ma.)	1200/600/100	2700	350
TZ-24XT	25000 CT.	500 CT.	2000	60
TZ-17XT	10000 CT.	2000 CT	1000	250
TZ-29XT	10000 CT.	10,000 CT	1100	1400
TZ-25	10000 (1 Ma.)	200	1500	120
TZ-32XT	1500 CT.	600 CT./150	160	65
TZ-26	1000 (5 Ma.)	50	355	20
TZ-28	600	50	95	11
TZ-103XT	4 Hy. or 1 Hy.	—	400	—
T-41X	1000 (10 Ma.)	200 CT.	430	130
T-42X	9800 (2 Ma.)	16	855	1.7
TY-44X	1000 (10 Ma.)	16/8/4	180	3.8
TY-47X	2000 CT.(10 Ma.)	16/8/4	260	4

### TRANSFORMERS FOR TRANSISTOR POWER SUPPLIES

Type No.	D.C. Volts Out of Rect.	D.C. Ma. Max.	Dimensions—Inches			MW
			H	W	D	
TY-68S	250	65	1¾	1¾	1½	1½
TY-69S	300	100	1¾	2¾	1¾	1½
TY-70S	325	150	2	2¾	2¼	1½
TY-71S	375	200	2	2¾	2¼	1½
TY-74S	600	200	2	4½	3	3¾

### EPOXY MOLDED TOROIDAL TYPE

Type No.	D.C. Source Volts	D.C. Volts Out Of Rectifier	D.C. Ma. Max.	Dimension—Inches		
				Dia.	Ht.	Wt. Lbs.
TY-78	12.6	250/125	100	1¾	1¼	.35
TY-79	12.6	300/150	200	1¾	1	.35
TY-80	12.6	325/162.5	150	1¾	1	.35
TY-81	12.6	375/187.5	200	2	1	.50

‡Static Shield • New item

TY-82	12.6	450/225	150	2	1	.50
TY-83	12.6	500/250	250	2¾	1¾	.85
TY-84	12.6	600/300	200	2¾	1¾	1.00
TY-85	12.6	600/300	350	2¾	2½	2.00
•TY-86	12.6	425/212.5	350	2¾	1¾	1.00
TY-88	28	250/125	80	1¾	¾	.25
TY-89	28	300/150	100	1¾	¾	.35
TY-90	28	325/162.5	200	1¾	1	.35
TY-91	28	375/187.5	200	2	1	.50
TY-92	28	450/225	200	2	1	.50
TY-93	28	500/250	250	2¾	1¾	.85
TY-94	28	600/300	200	2¾	1¾	1.00
TY-99	6.3	300/150	100	1¾	1	.35
TY-100	6.3	325/162.5	150	2	1	.50
TY-101	6.3	375/187.5	200	2¾	1¾	1.00
TY-102	6.3	450/225	150	2¾	1¾	1.00

### †† MINIATURE AUDIO — "Trijets"

Type No.	Primary Impedance	Secondary Impedance	Max. Level-DBM	Freq. Resp.
T-1X‡	600/250/50	50000	0	60-15000
T-2X‡	600/250/50	250000	0	100-15000
T-3X	600/250/50	60000 CT.	0	60-15000
T-5X‡	30/12/4	50000	0	50-15000
T-11X	15000	50000	10	60-15000
T-12X	15000	60000 CT.	10	60-15000
T-13X	15000 (3 Ma.)	950000 CT.	10	250-15000
T-14X‡	200	500000	10	200-10000
T-15X	15000	1 Megohm	10	150-15000
T-20X	15000	600/250/50	10	60-15000
T-21X	3000	50	10	100-15000
T-22X	15000 (3 Ma.)	600/250/50	10	100-50000
T-23X	2000 CT.	600/250/50	10	40-30000
T-24X	10000 CT.	2000 CT.	10	50-20000
T-25X	12000 CT.(2 Ma.)	600 CT./150	10	50-16000
T-26X	50000 CT.(.5Ma.)	600 CT./150	10	100-15000
T-31X‡	600/250/50	600/250/50	10	50-15000
T-32X	1500 CT. (2 Ma.)	600 CT./150	13	50-20000
T-33X‡	5000 CT.	5000 CT.	10	60-15000
T-34X	500 CT.	500 CT./125	13	50-20000
T-35X	600 CT.	2000 CT./500	13	50-20000
T-101X	50 henries @ .75 Ma.			
T-102X	6 Hy.-3 Ma. or 4 Hy.-6 Ma.			

††Low frequency loss will result from DC in windings other than where specified.

\*\*See Case Chart on Triad Page 15

## MINIATURES

### TRANSISTOR TRANSFORMERS

Type No.	Primary Matching Impedance	Primary Current MA	Secondary Matching Impedance	Maximum Level
TY-23X	50000	.5	500 CT.	100 MW
TY-24X	50000	.5	3000 CT.	200 MW
TY-25X	100000	.5	200 CT.	200 MW
TY-26X	100000	.5	3000 CT.	200 MW
TY-27XT	500 CT.	2	500 CT.	10 MW
TY-28XT	500 CT.	2	200 CT.	10 MW
TY-29X	24 CT.	500	8/4	8W
TY-30X	100 CT.	100	8/4	2W
TY-31X	200 CT.	50	8/4	2W
TY-32X	200 CT.	2	2000 CT.	200 MW
TY-33X	400 CT.	5	16/8/4	200 MW
TY-34X	400 CT.	5	2000 CT.	200 MW
TY-35X	500 CT.	2	150 CT.	100 MW
TY-36X	2000	2	1500 CT.	200 MW
TY-37X	2000 CT.	4	8000 CT.	200 MW
TY-38X	3000 CT.	4	1000 CT.	200 MW
TY-39X	4000 CT.		16/8/4	200 MW
TY-40X	5000	1	200 CT.	100 MW
TY-41X	16000	1	4000	100 MW
TY-42X	20000	.5	8/4	100 MW
TY-43X	20000	.5	800 CT.	100 MW
TY-44X	1000	10	16/8/4	200 MW

Continued on TRIAD Page 2

# TRIAD DISTRIBUTOR DIVISION



A DIVISION OF LITTON INDUSTRIES



## MINIATURES (Continued)

Type No.	Primary Matching Impedance	Primary Current MA	Secondary Matching Impedance	Maximum Level
TY-45X	500 CT.	5	16/8/4	200 MW
TY-46X	100	100	1000 CT.	1 W
TY-47X	2000 CT.	10	16/8/4	200 MW
TY-48X	100 CT.	40	16/8/4	.5 W
TY-49X	500 CT.	12	5000 CT.	1 W
TY-50X	125000	0	2000 CT.	40 MW
TY-51X	2000 CT.	10	200 CT.	100 MW
TY-52X	20000 CT.	1	2000 CT.	200 MW
TY-53X	200 CT.	10	400 CT.	6 W
TY-54X	15000	1.5	200 CT.	200 MW
TY-55X	2000 CT.	2	500 CT.	200 MW
TY-56X	10000	1	2000 CT.	200 MW
TY-57X	250 CT.	10	16/8/4	200 MW
TY-58X	125 CT.	15	8/4	200 MW
TY-59X	5000 CT.	1	50000 CT.	200 MW
TY-60X	200000	0	1000	100 MW
TY-61X	100	100	100 CT.	4 W
TY-62X	10000	2	4	100 MW
TY-63X	48 CT.	275	16/8	8 W
TY-64X	32 CT.	575	16/8/4	10 W
TY-65Z	32 CT.	575	6K/4K/3K	10 W
TY-66A	6 CT.	5A	6K/4K/3K	40 W
TY-67A	6 CT.	5A	16/8/4	40 W

## †† JO SERIES — Hermetically Sealed

Type No.	Primary Impedance	Secondary Impedance	Max. Level-DBM	Freq. Resp.	Case
JO-1	600/250/50	50000	0	60-15000	JOA
JO-2	600/250/50	250000	0	60-15000	JOA
JO-3	600/250/50	60000 CT.	0	50150000	JOA
JO-5	30/12/4	50000	0	50-12000	JOA
JO-11	15000	60000	10	50-15000	JOB
JO-12	15000	60000 CT.	10	50-15000	JOB
JO-13	15000-3 Ma.	95000 CT.	10	50-15000	JOB
JO-21	15000	600/250/50	10	20-20000	JOB
JO-22	15000-3 Ma.	600/250/50	10	100-10000	JOB
JO-23	20000 CT.	600/250/50	10	40-30000	JOB
JO-31	600/250/50	600/250/50	10	40-20000	JOB
JO-101	50 h.-2 Ma.				JOB

## DC TO AC TRANSISTOR TRANSFORMERS

Type	Primary	Secondary		
TY-75A	12v	115v	60cps	115 watts
TY-76A	12v	115v	60cps	60 watts
TY-468	28v	115v	400cps	60 watts
TY-46Z	12v	115v	400cps	60 watts

## DC TO DC CONVERTER TRANSFORMERS

For use in blocking oscillator type power supplies

No. Type	L.	W.	H.	Mtg. Cent-ers	*Typical Operation Input	Output
TY-200X	1 1/8	7/8	1 1/2	1 3/8	3VDC @ 20 Ma.	1050VDC @ 25 $\mu$ A
TY-201TZ	1/2	3/8	3/8		4VDC @ 15 Ma.	500VDC @ 50 $\mu$ A
TY-202X	1 1/8	7/8	1 1/2	1 3/8	3VDC @ 45 Ma.	550VDC @ 80 $\mu$ A

## POWER COMPONENTS HERMETICALLY SEALED

### Combined PLATE and FILAMENT Transformers Primary 115V — 50/60 cycle

Type No.	Plate Supply AC Volts	DC Ma.	Filaments	F Dim. (Min.) Inches	Case
HSM-200	120	100	6.3 CT.-1.6A.	1	FA
HSM-201	500 CT.	20	6.3 CT.-2A.	1 1/8	GA
HSM-202	120	20	6.3 CT.-.6A.	1 1/8	EA
HSM-203	600 CT.	50	6.3 CT.-2.5A. 5 -2A.	1 1/8	JB
HSM-205	700 CT.	70	6.3 CT.-3A. 5 -3A.	1 1/8	JA
HSM-207	700 CT.	120	6.3 CT.-5A. 5 -3A.	1 1/8	KA
HSM-208	626 CT.	200	6.3/5.0-3A. 6.3 CT. 5	1 1/8	KA
HSM-241	700 CT.-70V. bias.tap.	150	6.3 CT.-6A. 6.3-V.-2A. 5 -3A.	1 1/8	LA

\*New item

HSM-212	1000/800 CT.	190 (ch. in.) 150 (cd. in.)	6.3/5-4A. 6.3 CT.-4A. 6.3 V-4A.	1 1/8	FA
HSM-245	800/700 CT. 70 V. bias tap.	200	6.3 CT.-6A. 6.3-V.-4A. 5 -6A.	1 1/8	MA
HSM-216	1000/800 CT.	254 (ch. in.) 200 (cd. in.)	6.3/5-4A. 6.3 CT.-5A. 6.3-5A.	1 1/8	MA
HS-247	800/700 CT. 70 V. bias tap.	300	6.3 CT.-8A. 6.3-V.-4A. 5 -6A.	1 1/8	GP-15
HSM-218	1000/800 CT.	300 (ch. in.) 235 (cd. in.)	6.3/5-6A. 6.3 CT.-6A. 6.3-6A.	1 1/8	GP-15
HSM-219	(115/230 pri.) 760/ 1600 CT.	40/230 (ch. input)		Spcl.	GP-15

All types electrostatically shielded  
GP-15 dimens. 4 3/4" x 5 7/8" x 6 5/8" high. Wt. approx. 22 lbs.  
Mtg. centers 3 3/4" x 4 7/8".

### Combined PLATE and FILAMENT Transformers Primary 115V—400 cycle to operate 380 to 1500 cycles

Type No.	Plate Supply AC Volts	DC Ma.	Filaments	Insur. Test Volt.	F Dim. (Min.) Inches	Case
HS-402	475 CT.	20	6.3 CT.-1.5A.	1500	1 1/8	AJ
HS-401	500 CT.	40	6.3 CT.-1A. 6.3-1A.	1500	1	EB
HS-400	125	25	6.3 CT.-8A.	1500	2 1/2	AH
HS-404	500 CT.	120	6.3 CT.-3A. 6.3/5.0-3A.	1500	1 1/8	FA
HS-405	600 CT.	70	6.3 CT.-2A. 6.3-2A. *6.3-2A.	1500	1 1/8	GA
HS-407	600 CT.	120	6.3 CT.-3.5A. 6.3-3.5A. *6.3/5-3A.	1500	1 1/8	JB
HS-409	700 CT.	150	6.3 CT.-4A. *6.3/5-3A.	1500	1 1/8	HA
HS-413	450 CT.	200	6.3 CT.-6A. 6.3 -6A. *6.3/5-4A.	1500	1 1/8	JA
HS-415	800/600 CT.	200	6.3 CT.-6A. 6.3-6A. 6.3/5-6A.	2500	1 1/8	KB
HS-417	800/600 CT.	300	6.3 CT.-6A. 6.3-6A. 6.3/5-6A.	2500	1 1/8	LA

\* Tapped for 5 volt rectifier use. All types electrostatically shielded.

### SOLID STATE LOW-VOLTAGE TRANSFORMER

Primary 10/115/125 volts — 50/60 cycles

Type No.	Secondary AC Volts	RMS Amps	CT. Full Wave	Rectifier Circuit Bridge FW	Case
*HSM-248	35 CT.	3	14.5v	29v	KA

### AUDIO INTERSTAGE Transformers

Type No.	Primary Imped.	Turn Ratio	Freq. Resp.	Power Output	Shielding	Case
HS-23	15000	1:2.7	20-20000	40 MW	P-3	GP-4
HS-25	15000	1:2.72 overall	20-20000	75 MW	P-1	GP-4
HS-35	15000	1:2.72 overall	20-20000	26 MW	P-1	GP-2
HS-27	20000/5000	1:1.72 overall	20-20000	130 MW	P-1	GP-4
HS-29	20000/5000	1:2 overall	20-20000	30 MW	P-5	GP-4
HSM-31	20000/5000	1:1 or 2:1	20-20000	3 W		FA
HS-32	15000 (6 Ma.)	1:2 overall	20-15000	200 MW	P-1	GP-5



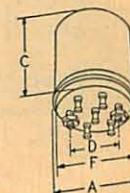
HS Series



JO Series



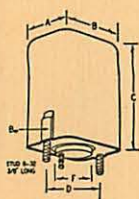
JO Series



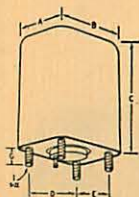
# TRIAD DISTRIBUTOR DIVISION



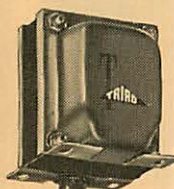
A DIVISION OF LITTON INDUSTRIES



GP 1, 2, 3



MIL-T-27A CASE



Case A



PL-4

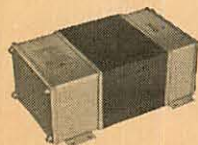
PL-5



PL-6



Case X



Case SC

## POWER OUTPUT to Line and VC. Hermetically Sealed

Type No.	Primary Impedance	Secondary Impedance	Max. Level-Watts	Freq. Resp.	** Case
HS-71	10000 (10 Ma.)	600/150	2	150-15000	AH-2
HS-73	5000 (40 Ma.)	500/250/16/8/4	5	70-15000	AJ-2
HS-75	1000 CT. (50 Ma. bal.)	500/250/16/8/4	10	100-25000	EB
HS-77	9000 CT. (120 Ma. bal.)	500/250/16/8/4	25	70-20000	GA

## LOW LEVEL AUDIO

### AUDIO INPUT TRANSFORMERS Hermetically Sealed

Type No.	Primary Imped.	Turn Ratio	Freq. Resp.	Power Output MW	Shielding	** Case
HS-1	600*/250*/150/62.5	1:11.3	20-20000	10	P-5	GP-4
HS-11	Same as above	Same as above	Same as above	Same as above	P-1	GP-2
HS-3	600*/250*/150/62.5	1:14 overall	20-20000	10	P-5	GP-4
HS-4	Same as above	Same as above	Same as above	Same as above	P-3	GP-4
HS-14	Same as above	Same as above	Same as above	Same as above	P-1	GP-3
HS-15	600*/250*/150/62.5 (10 Ma.)	1:8 overall	30-20000	100	P-3	GP-5
HS-5	30	1:65.7	40-12000	1	P-5	GP-4
HS-8	600*/250**/150/62.5	1:14 overall	20-20000	100	P-1	GP-4

\*Balanced center tap.

## OUTPUT, MIXING, MATCHING, BRIDGING

Type No.	Primary Imped.	Secondary Impedance	Freq. Resp.	Power Output MW	Shielding	** Case
HS-50	15000	600*/250*/150/62.5	20-20000	400	P-3	GP-4
HS-60	15000	600*/350*/150/62.5	20-20000	20	P-1	GP-4
HS-61	15000 (5 Ma.)	600*/250*/150/62.5	40-15000	200	P-1	GP-5
HS-52	20000 CT./5000	600*/250*/150/62.5	20-20000	400	P-1	GP-4
HS-54	20000 CT./5000	600*/250*/150/62.5	20-20000	30	P-5	GP-4
HS-56	600*/250*/150/62.5	600*/250*/150/62.5	10-30000	100	P-3	GP-4
HS-66	600*/250*/150/62.5	600*/250*/150/62.5	10-30000	100	P-1	GP-3
HS-58	600*/250*/150*62.5	600*/250*/150/62.5	20-30000	50	P-3H	GP-5

\* Balanced center tap.

## POWER COMPONENTS

Type No.	Primary Volts	Secondary Volts	Secondary Amperes	Insulation Test Voltage	** Case
HSM-223	115	6.3	0.6	1500	AJ-2
HSM-225	105-115-125	6.3 CT.	2	1500	EA
HSM-226	105-115-125	6.3 CT.	3.6	1500	FA
HSM-224	105-115-125	6.3 CT.	5.5	2500	HB
HSM-234	105-115-125	†6.3 CT. 6.3	10	2500	KA
HSM-227	105-115-125	†6.3 CT. 6.3	3	2500	GA
HSM-229	105-115-125	6.3 CT.	8	2500	JB
HSM-233	105-115-125	12.6 CT.	.8	1500	EA
HSM-237	105-115-125	12.6 CT.	2	2000	FA
HSM-230	105-115-125	24 CT.	0.8	1500	FA
HSM-239	105-115-125	24 CT.	1.5	2500	GA
HSM-240	115/230	†12.6 CT. 12.6	1.5	2500	GA
HSM-236	105-115-125	†12.6 CT. 12.6	2	2500	JB
HSM-228	105-115-125	†6.3 CT. 6.3	6	2500	JA
HSM-231	105-115-125	6.3 CT. 5 CT.	5	2500	JB
HSM-235	105-115-125	2.5 CT. 10 CT.	10	7500	MA

† Series or parallel connections.

\*\* See case chart Triad Page 15.

■ Discontinued item. Available until supply is exhausted

TRIAD PAGE 3

## POWER COMPONENTS (cont.)

HSM-238	105-115-125	†26 CT. 26	2	2500	JA
---------	-------------	------------	---	------	----

### FILAMENT TRANSFORMERS, 380/1500 cycle

Type No.	Primary Volts	Secondary Volts	Secondary Amperes	Insulation Test Voltage	** Case
HS-436	115	6.3 CT.	1	1500	AH
HS-425	105-115-125	6.3 CT.	2	1500	AJ-2
HS-427	105-115-125	6.3 CT.	5	2500	EA
HS-445	105-115-125	24 CT.	3	2500	EA
HS-438	105-115-125	24 CT.	1.5	1500	EA
HS-433	105-115-125	*6.3 CT. 6.3	5	2500	FA
HS-435	105-115-125	*6.3 CT. 6.3	3.5	2000	FA
HS-441	105-115-125	*5 CT. 5	10	2000	HA
HS-443	105-115-125	*2.5 CT. 2.5	10	7500	HA
HS-442△	57.5-99.7-115-120 Single phase.	*12.6 CT. 12.6	0.8	1500	EA
HS-444△	57.5-99.7-115-120	*26 CT. 26	2	2000	FA

△ Two Units can be used, 115 volt 3 phase to 26 volt 2 phase, Scott-connected. \* Series or parallel connection. † 5 volt tap for filament type rectifiers.

## HIGH FIDELITY OUTPUT

### HIGH LEVEL OUTPUT — Hermetically Sealed

Type No.	Primary Impedance	Secondary Impedance	Freq. Resp.	Max. Level Watts	F Di. Min. in.	** Case
HSM-79	20000 CT. (20 Ma.) or 5000 (40 Ma.)	16/8/4	40-20000	5	1 1/8	FA
HSM-80	20000 CT. (20 Ma.) or 5000 (40 Ma.)	600/250 CT. or 150/62.5	40-20000	5	1 1/8	FA
HSM-81	8000 CT. Split primary.	16/8/4	7-50000	15	1 1/8	JB
HSM-82	8000 CT.	600/250/125	7-50000	15	1 1/8	JB
HSM-181	8000/2000 CT. Split primary.	16/8/4	7-50000	15	1 1/8	JB
HSM-182	8000/2000 CT. Split primary.	600/250/125	7-50000	15	1 1/8	JB
HSM-84	5000 CT.	16/8/4	15-30000	20	1 1/8	JB
HSM-184	8000	16/8/4	10-50000	25	1 1/8	KB
HSM-189	10000/2500 CT. Split primary.	16/8/4	7-50000	25	1 1/8	KB
HSM-190	10000/2500 CT. Split primary.	500/250/125	7-50000	25	1 1/8	KB
HSM-186	6600 CT. or 1650 CT. Split primary.	16/8/4	7-50000	25	1 1/8	KB
HSM-187	6600 CT. or 1650 CT. Split primary.	500/250/125	7-50000	25	1 1/8	KB

(Continued on next page.)

# TRIAD DISTRIBUTOR DIVISION



A DIVISION OF LITTON INDUSTRIES



## HIGH FIDELITY OUTPUT (cont.)

HSM-94	4500 CT.	16/8/4	7-50000	55	1 1/2	LA
HSM-192	4000 CT. or 1000/445 CT. Split primary	16/8/4	7-50000	65	1 1/2	LA
HSM-193	4000 CT. or 1000/445 CT. Split primary.	500/150/125	7-50000	65	1 1/2	LA

## HIGH LEVEL OUTPUT

Type No.	Primary Impedance	Secondary Impedance	Output Watts
S-34X	4000 CT.	32/16/8	7.5
S-31A	8000 CT.	16/8/4	15
S-32A	8000 CT.	500/250/125	15
†S-142A	8000 CT.	16/8/4	15
S-35A	5000 CT.	16/8/4	20
S-36A	5000 CT.	500/250/125	20
†S-144A	8000 CT.	16/8/4	25
†S-146A	6600 CT.	16/8/4	25
S-149A	3300 CT.	16/8/4	50
S-42A	4500 CT.	16/8/4	50
SR-45Z*	4000/2000/1000/500	16/8/4	10
S-46A	2000/1000/500/250	16/8/4	20
†SX-201	3300 ohms CT.	4-8-16 ohms	10-15
†SX-202	4500 ohms CT.	4-8-16 ohms	10-15
SX-203	5000 ohms	4-8-16 ohms	5-7
SX-204	5000 ohms CT.	4-8-16 ohms	10-15
SX-205	6600 ohms CT.	4-8-16 ohms	10-15
†SX-206	6600 ohms CT.	4-8-16 ohms	10-15
†SX-207	8000 ohms CT.	4-8-16 ohms	10-15
SX-208	8000 ohms CT.	4-8-16 ohms	10-15

† Williamson type circuit. Proper taps on primary for screen operation, leads out both end bells.  
\* Replaces S-45Z.

## LINE POWER

### ISOLATION Transformers, 50/60 cycles

(See Triad page 6 for 380/1500 cycle isolation transformers)

Type No.	V. A. Output	Input Volts	Output Volts
N-51X	35	115	115
N-68X	50	230/115	115
N-53M	85	115	115
N-54M	150	115	115
N-67A	150	230/115	115
N-55M	250	115	115
N-66A	250	230/115	115
N-57M	500	115	115
N-59M	1000	115	115
†N-52M	350	95 to 130 (in 5V steps)	115
†N-56M	150	95 to 130 (in 5V. steps)	115
†With switch and meter for primary voltage control. Detachable cord.			
N-469A	50	460/230	115
N-470A	150	460/230	115
N-471A	300	460/230	115

### CONSTANT VOLTAGE TRANSFORMERS

Type No.	Rating V. A.	Input Volts	Output Volts
K-100	30	95-130	117
K-101	60	95-130	117
K-102	120	95-130	117
K-103	250	95-130	117
K-104	500	95-130	117
K-105	750	95-130	117

### STEPDOWN Autoformers, 50/60 cycles

Type No.	V. A. Output	Input Volts	Output Volts
N-1X	50	230	115
N-3M	85	230	115
N-4M	150	230	115
N-5M	250	230	115
N-7M	600	230	115
N-9M	1250	230	115
N-11M	2000	230	115
N-34X	150	95/105/115/125/135	115
†N-35M	250	95 to 130 (in 5V. steps)	115
†N-50M	500	95 to 130 (in 5V. steps)	115

With switch and meter.

† M case with switch for primary voltage control and detachable cord.

Note: Last letter of Type No. denotes case style.

\* Discontinued item. Available until supply is exhausted.

## FILTER REACTORS

Type No.	Current DC Ma.	Inductance *Henries	Resistance Ohms	Insulation Test Voltage
HSM-301	20	30	1000	1500
HSM-302	20	14	560	1500
HS-331	40	4	375	1500
HS-303	50	12	385	1500
HS-333	70	3	225	1500
HSM-305	70	15	300	2500
HS-335	120	3	150	1500
HSM-307	120	15	185	2500
HSM-309	150	9	115	2500
HS-339	200	3	105	2000
HSM-315	200	10	100	2500
HS-341	300	2	48	2000
HSM-319	300	10	85	2500

Minimum Inductance—20%

## PULSE TRANSFORMERS BLOCKING OSCILLATOR TYPE

Type No.	Pulse Voltage per Winding	Pulse Duration—us	Load Impedance—Ohms
PL-4	100-100	.54 to .66	500*
*PL-5	100-100-100	.36 to .54	2000*
PL-6	100-100-100	.36 to .54	2000*

\* As blocking oscillator in Triad circuit. Can be used with lower impedances and higher peak power at lower duty cycle.

## HIGH SPEED FERRITE TOROIDAL CORE LOW POWER

Type No.	Turns Ratio	Pulse Width μ Sec.	Rise Time μ Sec.	Repetition Rate	Suggested Load Ohms	Volts
PL-80E						
PL-80H	1-1	.07	.03	1-2 Mc	200	15
PL-80P						
PL-81E						
PL-81H	2-1	.07	.03	1-2 Mc	200	20
PL-81P						
PL-82E						
PL-82H	3-1	.08	.03	1-2 Mc	100	15
PL-82P						
PL-83E						
PL-83H	4-1	.08	.03	1-2 Mc	100	15
PL-83P						
PL-84E						
PL-84H	5-1	.08	.03	1-2 Mc	100	15
PL-84P						

The letter "H" indicates Hermetically Sealed, the letter "P" indicates Miniature Plug-in and the letter "E" indicates Epoxy Molded.

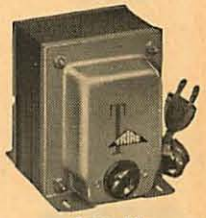
## LOW SPEED SILICON CORE LOW POWER

Type No.	Pulse Voltage per Winding	Pulse Duration—μ Sec.	Load Impedance—Ohms
*PL-124E	300-300-300	.6 to 5	150
PL-124H			
PL-140E	100-400-100	.6 to 5	175
PL-140H			
PL-140M			
PL-139E	100-100	.3 to 1.5	250
PL-139H			
PL-139M			
PL-146E	300-300	.6 to 5	250
PL-146H			
PL-146M			

Letter "M" indicates MIL type case. For pulse types only.



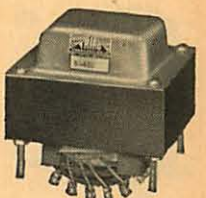
Case B



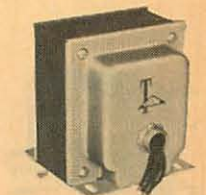
Case M



Case M with Meter



Case C



Case AC

# TRIAD DISTRIBUTOR DIVISION



A DIVISION OF LITTON INDUSTRIES



## Instrument POWER SUPPLY Transformers

For PREAMPLIFIERS, VTVM, etc.

Primary 115 volts — 60 cycles

Type No.	Plate Supply		Filament Windings Volts and Amperes
	AC Volts	DC Ma.	
R-68A	800 CT.	30	5V.-2A, 6.3V.-1.2A, 6.3V.-1.2A.
R-2C	135	15	6.3V.-9A.
R-23B	250 CT.	22	6.3.-8A, 15.5/12.6V.-6A.
R-3A	500 CT.	20	6.3V CT.-2A.
R-29A	230 CT.	40	6.3V CT.-1.5A.
R-30X	135	50	6.3V.-1.5A.
R-54X	115	15	6.3V.-.6A.
R-56A	130	20	0/15/22.5/30V.-6A.
R-73B	135	200	6.3V CT.-5.5A.

For CATHODE RAY Tubes

Primary 115 volts — 60 cycles

Type No.	Plate Supply		Filament Windings Volts and Amperes	
	AC Volts	DC Ma.		
R-41C	440-0- 440-1250.	125/5	*6.3V.-.6A. †2.5V.-1.75A. 5V.-3A.	†2.5V.-1.75A. 5V.-3A.
R-45C	400-0- 400-800.	30/5	*6.3V.-.6A. 6.3 CT.-3A. †5V.-2A	6.3V.-1A. 5V.-2A.
R-43C	1600	3	*6.3/5/2.5V.-1A. †6.3/5/2.5V.-3A.	

\* Static shielded and insulated for full plate voltage.  
† Insulated for full plate voltage.

For REGULATED POWER SUPPLIES

Primary 115 volts — 60 cycles

Type No.	Plate Supply		Filament Windings Volts and Amperes	
	AC Volts	DC Ma. Choke Input		
R-70A	880 CT.	75	6.3V.-.6A. 6.3V.-.3A.	6.3V.-.9A. 6.3V.-.3A.
R-26A	880-720 CT.	200	6.3 CT.-8A. 6.3V.-1A.	6.3V.-3A. 5V.-3A.
R-28A	1250 CT.	300	6.3 CT.-8A. 6.3V.-3A.	6.3V.-3A. 5V.-6A.
R-46A	1250 CT. 130 (Bias winding)	350	5V.-4A.	6.3V.-4A. 6.3V.-1A. 6.3V.-1A.
R-46A will supply 550 V. D.C. using 2 5R4G rectifier tubes, choke input. Will also supply 130 V. for bias using Selenium rectifier. Sufficient filament windings to regulate screen voltages.				
R-27A	1500 CT.	400	5V.-6A.	6.3V.-3A. 6.3V.-8A.

### UNIVERSAL

Isolation, Autoformer, Voltage Control 50/60CPS

Type No.	V.A. (Isolation)	V.A. (Autoformer)
N-64AC	500	1000
N-62AC	1000	2000
N-60SC	2000	4000

### SOLID STATE RECTIFIER POWER TRANSFORMERS

Primary 117 volts — 50/60 cycles

Type No.	Secondary No. 1		Secondary No. 2		Secondary No. 3		Mounting Centers
	Volts	MADC	Volts @ A	Volts @ A	Volts @ A	Volts @ A	
R200A	200-0-200	400	6.3	3	6.3	3	2 3/4 x 3 1/4
R201A	150-0-150	600	6.3	2.5	6.3	2.5	2 3/4 x 3 1/4
R202A	100-0-100	800	6.3	2	6.3	2	2 3/4 x 2 1/4
R-203A	50-0-50	1600	6.3	1.5	6.3	1.5	2 3/4 x 2 1/4
R-204A	40-0-40	2000	6.3	1.5	6.3	1.5	2 3/4 x 2 1/4
R-205A	30-0-30	2500	6.3	1.5	6.3	1.5	2 3/4 x 2 1/4

## SELENIUM RECTIFIER Transformers

Primary 60 cycles

These transformers are for use with Selenium rectifiers. Rectifiers not included.

Type No.	Primary Volts	Secondary		Half Wave Volts DC	Full Wave Volts DC
		AC Volts	Amperes RMS		
F-47U	115	17-18	3	6-7	13-14
F-48U	115	17-18	6	6-7	13-14
F-49U	115	36 36	3 3	13	26
F-60U	115	6.5-13- 19.5-26	3 (int.)	9	18
F-61U	115	24-27-30 33-36	3	13	26
F-67U	110-120	24-27-30- 33-36	8	13	26
F-63U	115	8-9 8-9	2 2		6-7
F-64U	115	7-8-9	7		6-7
F-62U	105-115- 125	9-9-9-9	10 ea. wdg.		6-7 ea. wdg.
F-68U	115	9 CT. 9 9 9	3.5 3.5 3.5 3.5		6-7 ea. wdg.
F-65U	110-120	140-150-160	.75	60	115
F-66U	110-120	140-150-160	2.5	60	115
F-79U	115	24-26-28-30	15	11.4	22.8
F-80U	tapped for mult. sec.	12 to 18 or 24 to 36CT	40	—	13
F-84AC	230-115	24CT or 12CT	10 20	—	8.5
F-90X	115 tapped	40CT-20CT-10	100ma	15	30
F-91X	115 tapped	40CT-20CT-10	300ma	15	30
F-92A	115 tapped	40CT-20CT-10	1 amp	15	30
R-93A	115	6.3CT (voltage doubler circuit) 150-160-170 (500ma)	6	65	120
F-93X	115V tapped	40CT-20CT-10	750ma	15	30
F-94X	115X tapped	40CT-20CT-10	35ma	15	30

### FILAMENT Transformers, Single Secondary

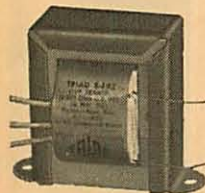
Primary 115 volts — 60 cycles

Type No.	Secondary Volts	Secondary Amperes	Test Volts
F-1X	2.5 CT.	3	1500
F-72Z	2.5 CT.	5	7500
F-6X	2.5 CT.	6	2500
F-3X	2.5 CT.	10	3000
F-5U	2.5 CT.	10	7500
F-71U	2.5 CT.	10	10000
F-7X	5 CT.	3	1500
F-8X	5 CT.	6	1500
F-12X	5 CT.	8	2500
F-9A	5.2 CT.	13	1500
F-10U	5 CT.	14	10000
F-9U	5.2 CT.	13	1500
F-15U	5 CT.	15	3000
F-11U	5.2 CT.	24	1500
F-13X	6.3	.6	1500
F-14X	6.3 CT.	1.2	2500
†F-52X	6.3	1.2	5000
†F-51X	6.3/5	2	5000
†F-53X	6.3	4	5000
F-16X	6.3 CT.	3	2500
F-18X	6.3 CT.	6	1500
F-18A	6.3 CT.	6	1500
F-19X	6.3/6 CT.	6	2000
F-21A	6.3 CT.	10	1500
F-20U	6.3/6 CT.	11	3000
F-17U	6.3 CT.	15	Pri. 1500 Sec. 10000
F-22A	6.3 CT.	20	2000
F-24U	7.5/6.3 CT.	8	3000
F-28U	7.5/6.3 CT.	25	3000
F-23U	10 CT.	7	1500
F-29U	12/11/10 CT.	11	3000
F-25X	12.6 CT.	1.5	1500

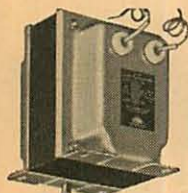
(Continued on next page.)



Case U



Case Z



Case AL



Case X

# TRIAD DISTRIBUTOR DIVISION



A DIVISION OF LITTON INDUSTRIES



F-44X	12.6 CT.	2	1500
F-26X	12.6 CT.	2.5	1500
F-45X	24 CT.	1	1500
F-41X	25.2 CT.	2	1500
F-40X	26.8 CT.	1	1500
F-50X	Filament line transformer Pri. 6.3V/5V Sec. 6.3/5V 2A		5000
F-83A	12.6 CT.	5	1500
	12.6 CT.	5	

† Low capacity—High voltage for damper tube operation.

## CHOKES

### SWINGING FILTER REACTORS

Type No.	Inductance Henries	Current Ma.	Resistance Ohms	Test Volts RMS
C-31A	25/5	20/200	150	2500
C-33A	25/5	30/300	105	3000
C-32AL	20/4	35/350	105	5000
C-35A	20/4	40/400	65	3000
C-39A	25/5	50/500	65	3000
C-38AL	25/5	50/500	65	5000

### SMOOTHING FILTER REACTORS

Type No.	Inductance Henries	Current Ma.	Resistance Ohms	Test Volts RMS
C-30X	50	15	3500	1500
C-2X	2	15	70	1500
C-1X	15	20	1000	1500
C-3X	10	50	500	1500
C-4X	4	50	360	1500
C-6X	5	65	330	1500
C-5X	12	75	390	1500
C-8X	7	75	240	1500
C-7X	10	90	270	1500
C-9X	4	90	100	1500
C-11X	6	110	160	1500
C-10X	9	125	250	1500
C-12X	6	160	165	1500
C-12A	6	160	165	1500
C-13X	3	160	75	1500
C-14X	6	200	150	1500
C-14A	6	200	150	1500
C-16A	10	200	150	2500
C-21X	1.5	225	65	1500
C-15X	4	250	100	1500
C-15A	4	250	100	1500
C-23X	1.2	260	45	1500
C-24X	1	240	50	1500
C-27X	.7	290	25	1500
C-36X	.5	300	30	1500
C-17X	1.5	300	40	1500
C-18A	8	300	90	2500
C-19A	10	300	105	3000
C-25A	2.6	310	60	1500
C-42AL	8	350	105	5000
C-34X	.6	350	35	1500
C-28X	1	350	35	1500
C-29X	1.5	375	50	1500
C-50X	2	400	40	2500
C-20A	6	400	60	3000
C-22A	10	500	65	3000
C-45AL	10	500	65	5000
C-40X	.32	600	10	1500
C-47U	.3-.075	1A-2A	3-.75	1500
C-48U	.08-.02	2.5A-5A	.57-.143	1500
C-49U	.032-.008	5A-10A	.19-.05	1500
C-80U	.024-.006	20A-40A	.096-.024	1500

### ISOLATION Transformers

Primary 115V—400 cycle to operate 380 to 1500 cycles

Type No.	Secondary Volts	Amp.	V. A.	F Dim. (Min.) Inches	Case
HS-470	115	.35	40	1	EA
HS-471	115	.7	80	1	FA
HS-472	115	1.4	160	1	GA
HS-474	115	2.6	300	1	JA
HS-475	115	4.4	500	1	KA

60 cycle — hermetically sealed

Type No.	secondary volts	amp.	V.A.	F dim. (Min.) inches	Case
HSM-270	105-115-125	.4	50	1	JB
HSM-271	105-115-125	1	125	1	KA
HSM-272	105-115-125	2	250	1 1/4	NB

All isolation transformers electrostatically shielded.

### FILAMENT Transformers, Multiple Secondary

Primary 115 volts — 60 cycles

Type No.	Secondary Volts and Amperes	Test Volts RMS
F-27U	10 CT.-10A. 2.5 CT.-10A.	1500 7500
F-30A	5 CT.-3A. 6.3 CT.-8A.	1500
F-32A	6.3 CT.-3A. 6.3 CT.-3A.	1500
F-34A	6.3 CT.-1.75A. 6.3V.-1.75A. 6.3V.-1.75A. 6.3V.-1.75A.	1500
F-36A	6.3 CT.-3.5A. 6.3V.-3.5A. 6.3V.-3.5A. 6.3V.-3.5A.	1500
F-38A	6.3 CT.-5A. 6.3V.-5A. 6.3V.-1A. 5 CT.-2A.	1500
F-42A	12.6 CT.-2.5A. 12.6-2.5A.	1500

### AUDIO INPUT TRANSFORMERS

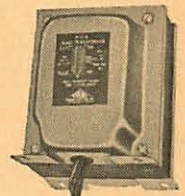
Low Level Input

Type No.	Application	Frequency Response	Primary Impedance	Turn Ratio
A-9J	line or mike to grid	30-15000	600/250/50	12
A-10J	line to grid	30-15000	600/150 split wdgs.	10.5
A-11J	line or mike to grid 60-80DB shielding	30-15000	600/250/50	10
A-12J	same as A-11J	30-15000	600 CT./150 split windings	10
A-13J	line to transistor or line to line (70 db Shldg)	30-15000	600/300/200 CT./110/50 split windings	1
A-40J	par. fed 6J5 or 6SN7 plate to P.P. grids	30-15000	15000	2.76
A-41J	same as A-40J 8ma DC in primary	30-15000	15000	2.3
A-50J	pp plates to voice coil	30-15000	10000 CT.	35.3
A-52J	line or transistor to line or transistor	30-15000	500/CT./125 20 MA. D.C. Split Winding	2
A-55J	par. fed 6J5 or 6SN7 to line	30-15000	15000	5
A-56J	line or transistor to Voice Coil	30-15000	500 CT./125 20 MA. D.C. Split Winding	5.6
A-58J	pp plates or transistors to line or transistors	30-15000	10000 CT./2500 Split Winding	2.24
A-64J	line or transistor to transistor	30-15000	100 CT.*25 30 MA. D.C. Split Winding	1.58
A-65J	par. fed 6J5 or 6SN7 to line	30-15000	15000 CT.	5
A-66J	same as A-65J—5 ma DC in primary	40-15000	15000	5
A-67J	line to line	30-15000	600 CT./150 split windings	1
A-68J	pp plate to line 4 ma DC in primary	30-15000	15000 CT.	5
A-69J	pp plates or bridging to line 3 MA. D.C. in Primary	30-15000	25,000 CT./6250 Split Winding	7.1
A-70J	line or transistor to line or transistor	30-15000	500 CT./125 15 MA. D.C. Split Winding	2.24
A-77J	Audio choke — dual winding	250 henries - 5 ma DC 62.5 henries - 10 ma DC		
A-78J	output pp transistors to line	30-15000	2000CT	1.82
A-57J	line or transistor to line	30-15000	600/250/50	1:1
A-79J	Transistor inter-stage 10ma in primary	20-15000	1000	2.2

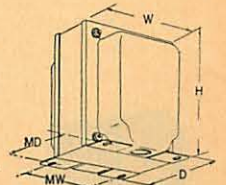
### Line or Microphone to Grid

Type No.	Application	Frequency Response	Primary Impedance	Turn Ratio
A-1X	Line or single button mike to grid.	100-15000	100	31.4
A-3X	Line or D.B. mike to grid.	200-10000	400 CT.	22.1
A-4X	Line to grid.	100-20000	500/200/67.5 CT.	12
A-5X	Single button mike to p.p. grids—Hi-gain.	100-15000	100	84
A-6X	Speaker V.C. to grid	150-20000	8/3.2	79
A-7J	Voice coil to grid	150-10000	3.2	124

‡ Discontinued item, available until stock depleted.



Case A



Case A

Triad J Series offers flexibility enabling your amplifiers to exceed broadcast standards. Although economy in construction has cut costs, these transformers approach and closely approximate performance characteristics found in more costly hermetically sealed parts. Single hole mounting provides for rotation for maximum reduction of hum... alloy shielding gives you 40-60 db hum reduction (60-80 db in Types A-11J & A-12J)... you can obtain wide frequency ranges... flexible leads facilitate ease in mounting... input units are electrostatically and magnetically shielded... light weight and encased in Triad's satin smooth baked gray enamel cases, 1 3/8" diameter, 1 3/4" above chassis... legible circuit diagrams are permanently affixed to every case.



A DIVISION OF LITTON INDUSTRIES



# TRIAD DISTRIBUTOR DIVISION

## AUDIO OUTPUT TRANSFORMERS

Line to Voice Coil

Type No.	Primary Impedance	Output Imped.	Output Watts	Freq. Resp.
S-23X	50 (autoformer).	3.2	1	100-8000
S-26X	500/50 (autoformer).	3.2	4	100-8000
S-65X	500	8/4	5	100-10000
S-66X	500 (autoformer).	16/8/4	3	100-10000
S-76Z	250/125/62.5/31	16/8/4	10	40-15000
S-77U	500 CT./125 split wdgs.	32/16/8/4/2	30	40-15000

## POWER

### Combined PLATE and FILAMENT Transformers

Primary 115 volts — 60 cycles

Type No.	Plate Supply		Rect. Fil.		Other Fil.	
	AC Volts	DC Ma.	Volts	Amp.	Volts	Amp.
R-22A	380/320 CT.	70	6.3	.6	6.3 CT.	3
R-22B	380/320 CT.	70	6.3	.6	6.3 CT.	3
R-4A	500 CT.	40			6.3 CT.	2
R-4B	500 CT.	40			6.3 CT.	2
R-5A	600 CT.	65			6.3 CT.	2.7
R-5B	600 CT.	65			6.3 CT.	2.7
R-6A	480 CT.	50	5	2	6.3 CT.	2
R-6B	480 CT.	50	5	2	6.3 CT.	2
R-7A	600 CT.	50	5	2	6.3 CT.	2
R-7B	600 CT.	50	5	2	6.3 CT.	2
R-8A	500 CT.	75	5	2	6.3 CT.	2.5
R-8B	500 CT.	75	5	2	6.3 CT.	2.5
R-9A	600 CT.	75	5	2	6.3 CT.	3

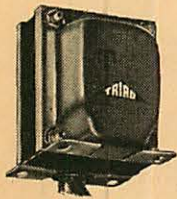
R-9B	600 CT.	75	5	2	6.3 CT.	3
R-10A	525 CT.	90	5	2	6.3 CT.	5
R-10B	525 CT.	90	5	2	6.3 CT.	5
R-11A	700 CT.	90	5	2	6.3 CT.	3.5
R-11B	700 CT.	90	5	2	6.3 CT.	3.5
R-12A	550 CT.	110	5	2	6.3 CT.	5
R-12B	550 CT.	110	5	2	6.3 CT.	5
R-14A	700 CT.	125	5	3	6.3 CT.	4.5
R-14B	700 CT.	125	5	3	6.3 CT.	4.5
R-16A	700 CT.	160	5	3	6.3 CT.	5
R-16B	700 CT.	160	5	3	6.3 CT.	5
R-17A	750 CT. 80 Tap	160	5	3	6.3 CT. 2.5 CT.	5 5
R-18A	750 CT.	175	5	3	6.3 CT.	8
R-18B	750 CT.	175	5	3	6.3 CT.	8
R-19A	750 CT. 80 Tap	200	5	3	6.3 CT. 2.5 CT.	10 6
R-20A	700 CT.	200	5	3	6.3 CT.	8
R-20B	700 CT.	200	5	3	6.3 CT.	8
R-72A	800 CT.	140	5	3	6.3 CT.	4
R-21A	800 CT.	200	5	3	6.3 CT.	6
R-21B	800 CT.	200	5	3	6.3 CT.	6
R-24A	800 CT.	300	5	6	6.3 CT.	6
R-24B	800 CT.	300	5	6	6.3 CT.	6
R-25A	800 CT.	500	5	6	6.3 6.3 CT.	3 7
R-58A	875 CT.	185	5	3	6.3 6.3	4 3
R-71A	900 CT.	250	5 CT.	4	6.3 CT. 6.3	2 4
R-93A	150-160-170 250	500	Silicon Rectifier Voltage doubler		6.3 CT.	6

### Combined PLATE and FILAMENT Transformers "100" Series

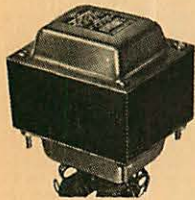
Never have the outstanding features of Triad Combined Plate and Filament Power Transformers been available at such realistic costs. No quality or performance requirement has been overlooked... specify Triad and be certain. Shielding, impregnation, chatter freedom... to Triad's demanding quality control standards.

#### PRIMARY 115 VOLTS 60 CYCLES

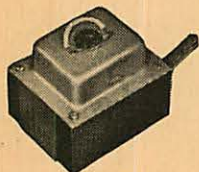
Type No.	Plate Supply		Rect. Filaments		Other Filaments		Case Dim.			Mtg. Dim.		Wt. Lbs.
	AC Volts	DC Ma.	Volts	Amp.	Volts	Amp.	H	W	D	MW	MD	
R-104A	500 C.T.	40			6.3 V.C.T.	2	2 3/8	2 3/8	2 1/4	1 3/4	1 1/2	1.55
R-104B	500 C.T.	40			6.3 V.C.T.	2	1 5/8	2 3/4	2 1/4	2 3/8	1 3/4	1.55
R-105A	600 C.T.	65			6.3 V.C.T.	2.7	3 1/8	2 5/8	2 1/2	2	1 3/4	2
R-105B	600 C.T.	65			6.3 V.C.T.	2.7	1 3/4	3 1/8	2 5/8	2 1/2	2	2
R-106A	480 C.T.	50	5	2	6.3 V.C.T.	2	3 1/8	2 5/8	2 3/8	2	1 5/8	2.05
R-106B	480 C.T.	50	5	2	6.3 V.C.T.	2	1 5/8	3 1/8	2 5/8	2 1/2	2	2.05
R-107A	600 C.T.	50	5	2	6.3 V.C.T.	2	3 1/8	2 5/8	2 1/2	2	1 3/4	2.35
R-107B	600 C.T.	50	5	2	6.3 V.C.T.	2	1 3/4	3 1/8	2 5/8	2 1/2	2	2.35
R-108A	500 C.T.	75	5	2	6.3 V.C.T.	2.5	3 1/8	2 5/8	2 5/8	2	1 7/8	2.4
R-108B	500 C.T.	75	5	2	6.3 V.C.T.	2.5	1 7/8	3 1/8	2 5/8	2 1/2	2	2.4
R-109A	600 C.T.	75	5	2	6.3 V.C.T.	3	3 1/2	3	2 7/8	2 1/4	1 3/4	2.9
R-109B	600 C.T.	75	5	2	6.3 V.C.T.	3	1 3/4	3 1/8	2 7/8	2 1/8	2 1/4	2.9
R-110A	525 C.T.	90	5	2	6.3 V.C.T.	5	3 1/2	3	3 1/4	2 1/4	2	3.25
R-110B	525 C.T.	90	5	2	6.3 V.C.T.	5	2	3 1/8	2 7/8	2 1/8	2 1/4	3.25
R-111A	700 C.T.	90	5	3	6.3 V.C.T.	3.5	3 1/2	3	3 1/4	2 1/4	2	3.55
R-111B	700 C.T.	90	5	3	6.3 V.C.T.	3.5	2	3 1/8	2 7/8	2 1/8	2 1/4	3.55
R-112A	550 C.T.	110	5	2	6.3 V.C.T.	5	3 1/2	3	3 3/8	2 1/4	2 1/8	3.7
R-112B	550 C.T.	110	5	2	6.3 V.C.T.	5	2 1/8	3 1/8	2 7/8	2 1/8	2 1/4	3.7
R-113A	650 C.T.	40	5	2	6.3 V.C.T.	2	3 1/8	2 5/8	2 3/4	2	1 3/4	2.3
R-113B	650 C.T.	40	5	2	6.3 V.C.T.	2	2	3	2 1/2	2 1/2	2	2.3
R-114A	700 C.T.	125	5	3	6.3 V.C.T.	4.5	3 7/8	3 1/4	3 1/4	2 1/2	2 3/8	4.7
R-114B	700 C.T.	125	5	3	6.3 V.C.T.	4.5	2 1/2	3 3/4	3 1/8	3 1/8	2 1/2	4.7
R-115A	680 C.T.	70	5	2	6.3 V.C.T.	2.5	3 5/8	3	3 3/8	2 1/4	2 1/8	3.5
R-115B	680 C.T.	70	5	2	6.3 V.C.T.	2.5	2	3 1/8	2 7/8	2 1/8	2 1/4	3.5
R-116A	700 C.T.	160	5	3	6.3 V.C.T.	5	3 7/8	3 1/4	3 5/8	2 1/2	2 5/8	5.65
R-116B	700 C.T.	160	5	3	6.3 V.C.T.	5	2 5/8	3 3/4	3 1/8	3 1/8	2 1/2	5.65
R-118A	750 C.T.	175	5	3	6.3 V.C.T.	8	4 1/4	3 5/8	4	2 3/4	2 7/8	7.45
R-118B	750 C.T.	175	5	3	6.3 V.C.T.	8	2 7/8	4 1/8	3 1/2	3 1/8	2 3/4	7.45
R-120A	700 C.T.	200	5	3	6.3 V.C.T.	8	4 1/4	3 5/8	4 1/8	2 3/4	2 7/8	8.25
R-120B	700 C.T.	200	5	3	6.3 V.C.T.	8	3	4 1/8	3 1/2	3 1/8	2 3/4	8.25
R-121A	800 C.T.	200	5	3	6.3 V.C.T.	6	4 1/4	3 5/8	4 3/8	2 3/4	3 1/4	8.25
R-121B	800 C.T.	200	5	3	6.3 V.C.T.	6	3 1/4	4 1/8	3 1/2	3 1/8	2 3/4	8.25



Case A



Case B



Case BS

# TRIAD DISTRIBUTOR DIVISION



A DIVISION OF LITTON INDUSTRIES



## PLATE POWER Transformers

Type No.	Secondary Volts		Sec. D.C. Ma.		Rect. Fil.
	AC	DC	CCS	ICAS	
P-1A	440/220 CT.	180/90	160	190	5V-3A
P-3A	600/300 CT.	250/125	300	360	5V-4A
P-5A°	1100 CT.	400	250	300	5V-4A
P-7A°	1235 CT.	500	250	300	5V-4A
P-9A	1235 CT.	500	500	600	5V-6A
P-11A°	1455 CT.	600	250	300	
P-213AL*†	1780 CT.	750	250	300	
SP-14A	1780 CT.	750/600	250	300	
P-215AL*†	2340 CT.	1000	250	300	
P-216AL*†	2430 CT.	1000	500	600	
P-217AL*†	2880 CT.	1250	250	300	
P218AL*†	2880 CT.	1250	500	600	
P-220AL*†	3300 CT.	1500	350	420	
PR-21AL	3300 CT.	1500	500	600	

† Plate leads out side of case for 866 rectifiers.

‡ Tapped Pri. to produce the lower D.C. voltage.

°Pri. is 230/115V.

°60 cycle only.

## TELEVISION COMPONENTS

### Replacement POWER Transformers, Combined Plate and Filament

Electrostatically shielded. Primary 115 volts 60 cycles.

Type No.	Plate Supply		Filaments — Volts and Amperes	
	AC Volts	DC Ma.	5V.—	6.3V.—
R-37BC	735 V.C.T.	275	5V.—6A. 6.3V.—8.5A. 6.3V./5V.—2A.*	
R-38A	750 V.C.T.	225	5V.—3A. 6.3V.—10A. 6.3V.—1.2A.* 6.3V.—2.5A.	
R-38BC				
R-39BC	640 V.C.T.	225	5V.—3A. 6.3V.—10A. 6.3V.—1.2A.*	
R-40BC	780/440 V.C.T.	300	5V.—3A. 5V.—3A. 5V.—2A. 6.3V.—8.5A. 6.3V.—3.5A.	
R-42BC	675 V.C.T.	185	5V.—3A. 6.3V.—7A. 6.3V.—2A.*	
R-49BS	650 V.C.T.	240	5V.—3A. 6.3V.—9A. 6.3V.—0.9A. 6.3V.—1.2A.*	
R-49BC				
R-50A	790/650 V.C.T.	310	5V.—3A. 5V.—3A. 5V.—2A. 6.3V.—5A. 6.3V.—5A. 6.3V.—2.6A.	
R-50BC				
R-51BC	505 V.C.T.	320	5V.—6A. 6.3V.—5A. 6.3V.—5A. 6.3V.—1.2A.*	
R-52BC	600 V.C.T.	270	5V.—3A. 6.3V.—5A. 6.3V.—5A. 6.3V.—1.2A.*	
R-60BC	460 V.C.T.	300	5V.—6A. 6.3V.—10A. 6.3V.—1.2A.* 6.3V.—2.5A.	
R-61BC	560 V.C.T.	275	5V.—6A. 6.3V.—6A. 6.3V.—6A. 6.3V.—1.2A.*	
R-62BC	680 V.C.T.	290	5V.—6A. 6.3V.—10A. 6.3V.—1.5A. 6.3V.—1.2A.*	
R-64BC	520 V.C.T.	270	5V.—3A. 6.3V.—10A.	
R-65BC	550 V.C.T.	270	5V.—3A. 6.3V.—10A.	
R-66BC	580 V.C.T.	270	5V.—3A. 6.3V.—10A.	
R-67BC	600 V.C.T.	250	5V.—3A. 6.3V.—9A.	
R-69BC	550 V.C.T.	270	5V.—3A. 6.3V.—10A.	
R-74BC	680 V.C.T.	190	6.3V.—7.8A. 6.3V.—1.2A. (damper wdg)	5V.—3A.
R-75BA	560 .C.T.	280	5V.—3A. 6.3V.—9.5A.	
R-79BA	127V.	1000	6.3V.—2A 6.3V.—10A. 12.6V.CT.—2A.	
R-80BA	500V.CT.	300	5V.—6A 6.3V.—2.0A	6.3V.—8A 6.3V.—5A
R-86BA	117/129*141 multi-purpose	1000	6.3V.—6A 6.3V.—6A	12.6V.CT.—2A

\* Less than 100 m.m.f.d. capacity to ground and insulated for high voltage damper tube.  
Height of transformers in BC cases is measured from chassis line to top of case. Copper shading ring on all BC cases to reduce external magnetic field.

Note: Last letter of Type No. denotes case style.

## AUDIO

Triad Replacement Output Transformers furnish a wide range of size and mounting characteristics... specifically engineered for mounting in precise location in chassis. Climatite treated... manufactured to exacting quality standards of more costly types... progressively designed for advanced circuitry and audio tubes... total complete coverage over impedance and wattage ranges... Triad units provide finest response in minimum space... and outlive all others.

### REPLACEMENT OUTPUT TRANSFORMERS

Single Tube To Standard Voice Coil 3-4 Ohms

Type No.	Primary Impedance	D.C. Ma	Audio Watt
S-20X	2000	50	2-3
S-20Z	2000	50	2-3
S-2X	2000	55	3-5
S-12X	2500	50	2-3
S-12Z	2500	50	2-3
S-1X	2500	60	3-5
S-50X	2500	60	4-6
S-16X	3000 5% Tap	50	2-3
S-30X	3000	60	3-5
S-67X	3200	60	4-6
S-4X	3000	70	5-8
S-14Z	4000	50	2-3
S-41X	4000	50	3-5
S-41Z	4000	50	3-5
S-6X	5000	35	2-3
S-6Z	5000	35	2-3
S-3X	5000	40	3-5
S-5X	5000	50	5-8
S-5Z	5000	50	5-8
S-48X	6500	35	2-3
S-48Z	6500	35	2-3
S-49X	6500	35	3-5
S-7X	7500	30	3-5
S-9X	7500	50	5-8
S-9Z	7500	50	5-8
S-8X	8000	30	2-3
S-8Z	8000	30	2-3
S18X	8000	45	4-6
S-18Z	8000	45	4-6
S-11X	10000	30	2-3
S-11Z	10000	30	2-3
S-17X	10000	30	3-5
S-10X	10000	45	4-6
S-40X	14000	5.5	1/4
S-38X	16000	15	2-3
S-38Z	16000	15	2-3
S-37X	25000	4.0	1/4
S-13X	25000	10	2-3
S-13Z	25000	10	2-3

### REPLACEMENT PUSH-PULL OUTPUT TRANSFORMERS

Push-Pull Tubes To Voice Coil 3-4 Ohms

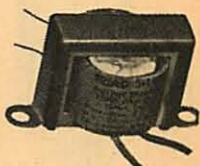
Type No.	Impedance	D.C. MA. Each Side	Audio Watts
S-39X	12000 CT.	30	3-4
S-64X	6000 CT.	40	4-6
S-15X	10000 CT.	35	7-10
S-19Z	10000 CT.	50	10-14
S-68Z	3000/3800 CT.	90	15-18
S-69Z	5000 CT.	60	15-18
S-21A	8000 CT.	55	15-18
S-21Z	8000 CT.	55	15-1



Case Z



Case A



Case X



# TRIAD DISTRIBUTOR DIVISION



A DIVISION OF LITTON INDUSTRIES



## AUDIO

### LOW LEVEL OUTPUT Transformers

Type No.	Application	Freq. Resp.	Pri. Imped.	Second. Imped.
A-51X	Tube to line.	300-3000	7000	50
A-53X	Single or p.p. tubes to line.	70-7000	18000 CT.	600/250/50
A-54X	P.P. Tubes to V.C.	150-30000	7700 CT.	8/4
A-55J	Parallel-fed 6J5 or 6SN7 to line. 45 db. shielding	30-15000	15000	600/250/50
A-65J	Parallel-fed 6J5 or 6SN7 to line. 45 db. shielding.	30-15000	15000	600/150 Split winding
S-58X	Line to line.	300-3000	600/150	600/150 —Split windings—
A-67J	Line to line. 45 db. shielding.	30-15000	600/150	600/150 —Split windings—



Case X

### SPLATTER Chokes

Type No.	Inductance Henries	Current Ma.	Res. Ohms	Wt. Lbs.
C-26X	Tapped to 1.5	100	95	1 1/4
C-43X	Tapped .05 to 1	300	40	2



Case J

### UNIVERSAL OUTPUT Transformers Single Or Push-Pull Tubes To Voice Coil

Type No.	Application	Impedance	DC Audio MA	Watts
S-62X	Single or P.p. plates	2000-10000	30	2
S-52X	Single or p.p. plates	4000-24000	30	4
S-51X	Single or p.p. plates	4000-14000	35	5
S-63X	Single or p.p. plates	1500- 7000	50	6
S-54X	Single	1500- 5000	70	8
S-53X	Single or p.p. plates	4000-14000	40	8
S-55X	P.p. plates	4000-14000	40	10
S-55Z	P.p. plates	4000-14000	40	10
S-56Z	Single	1500- 6000	85	12
S-59Z	P.p. plates	1500- 4000	65	15
S-57Z	P.p. plates	4000-14000	55	15
S-61Z	P.p. plates	4000-10000	60	20



Case P

### PLUG-IN INPUT Transformers

Type No.	Application	Pri. Imped.	Second Imped.	Freq. Resp.	Shld'g
A-200P	Line to mike to grid.	200/50 CT. Δ	36,000	30-20000	70 db.
A-202P	Same as above.	200/50 CT. Δ	36,000	20-20000	90 db.
HS-273P	Same as above	200/50 CT. Δ	80,000	30-30000	70 db.
A-210P	Stereo Isolation	1:1 ratio	30,000	20-20000	45 db.

Δ Split Winding

### INTERSTAGE Transformers Plate to Grid

Type No.	Application	Freq. Resp.	Pri. Imped.	Second Imped.	Ratio
A-31X	Plate to single or p.p. grids	300-3000	10000	90000CT	1 : 3
A-33X	Plate to single or p.p. grids	70-7000	10000	90000CT	1 : 3
A-42Z	Multi-ratio single or p.p. plates to single or p.p. grids.	70-7000	15000 CT.	135000CT. or 33750	1 : 1.5 1 : 3 1 : 6
A-35A	Plate to single or p.p. grids	50-10000	10000	90000CT	1 : 3
A-39A	P.p. plates to p.p. grids	50-10000	20000 CT.	45000CT	1 : 1.5
A-40J	Parallel-fed 6J5 or 6SN7. Plate to p.p. grid 45 db. shielding.	30-15000	15000	115000CT	1 : 2.76

### MODULATION Transformers Tube to RF Load

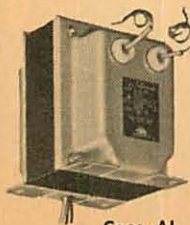
Type No.	Primary	Freq. Resp.	Secondary Impedance	Ma.	Aud. Wtts.
TY-65Z	32 CT. (575 Ma.) (Transistor use)	70-15000	3000-4000-6000	100	10
M-4Z	5000 (Auto-former).	300-3000	6750 4	100 (total)	10
M-5Z	5000 (Auto-former).	300-3000	6750 4	165 (total)	20
M-1X	10000 CT. for 19, 1J6, 6N7, 6A6, etc.	300-3000	5000-8000-10000	50	5
M-3X	10000 CT. for 6N7, 6A6, 6F6's, etc.	300-3000	3000-5000-8000	100	20
TY-66A	6 CT. (5A) (Transistor use)	300-3000	3000-4000-6000	200	40
†M-7AL	4250 CT. for 807's	300-3000	3000-5000-8000	200	60
M-15A	Multi-match	300-3000	4000 to 20000	150	30
†M-12AL	Multi-match	300-3000	4000 to 20000	300	125

### DRIVER Transformers

Type No.	Driver Tubes	Output Tubes	Frequency Response	Ratio Primary 1/2 Sec.	Primary D.C. Ma.
A-81X	30, 1H4, etc.	19, 30's, 1J6, etc.	200-20,000	2.66:1	15
A-83X	6F6, 42, 45, etc.	6L6, 6F6, 6V6, 807, etc.	70-7000	1.33:1	40
A-85X	6F6, 42, 45, etc.	6L6, 6F6, 6V6, 807, etc.	50-10000	2.66:1	40
A-89A	P.p. plates to class B or AB grids— Universal 15 watt.	Any class B or AB tubes. 100-500 watts output	50-10000	3.1 or 1.8:1	100 per side
TY-61X	Transistor use		70-10000	1:0.5	100

‡Discontinued item. Available until supply is exhausted

†Plate leads out side



Case AL

# TRIAD DISTRIBUTOR DIVISION



A DIVISION OF LITTON INDUSTRIES



## OUTPUT Transformers Tube to Voice Coil and Line

Type No.	Tubes	Pri. Imped.	Sec. Imped.	DC Pri.	Audio Watts
S-27A	2A3, 6A3, 6B4, 6L6, 6U6, 6Y6, 12A5, 25B6, 35B5, 50A5.	2500	500/16/8/4	80	8
S-28X	2A5, 6AC5, 6B5, 6F6, 6K6, 7B5, 14A5, 25AC5.	7500	500/16/8/4	40	5
S-29X	6AQ5, 6AS5, 6V6, 7C5, 25A6, 25B5, 25L6, 25N6, 35A5, 35L6.	5000	500/16/8/4	45	5
S-22A	P.p. 2A3, 6B4, 6A5, 6L6, etc.	5000 CT.	500/16/8/4	100 (bal.)	15
S-24A	P.p. 6V6, 7C5, 6K6, 6F6, etc.	8000 CT.	500/16/8/4	80 (bal.)	15
S-60A	P.p. 6L6, 5881, 6600 CT.	500/250/16/8/4	120 (bal.)	35	

## 70.7 volt Line to Voice Coil

Type No.	Primary Impedance	Sec. Imped.	Output Watts	Freq. Resp.
S-70Z	Autoformer 16000/8000/4000/2000/1000.	8/4	5	40-15000
S-71Z	Autoformer 4000/2000/1000/500.	16/8/4	10	40-20000
S-25Z	Autoformer 4000/2000/1000/500.	8/4	10	30-20000
SR-45Z	Autoformer 4000/2000/1000/500.	16/8/4	10	20-20000
SR-74K	Weatherproof autoformer 4000/2000/1000/500.	16/8/4	10	20-20000
S-72Z	Autoformer 2000/1000/500/250.	16/8/4	20	40-20000

## 70.7 volt Line to Voice Coil (Cont.)

Type No.	Primary Impedance	Sec. Imped.	Output Watts	Freq. Resp.
S-46A	Autoformer 2000/1000/500/250.	16/8/4	20	20-20000
S-75K	Weatherproof autoformer 2000/1000/500/250.	16/8/4	20	20-20000
S-78Z	Isolation 4000/2000/1000/500.	16/8/4	10	40-20000
S-79Z	Isolation 2000/1000/500/250.	16/8/4	20	40-20000
S-47Z	10K/5K/2.5K/1250/625	16/8/4	8	20-20000
S-73X	Isolation 16K/8K/4K/2K/1K	16/8/4	5	40-15000

## 25 VOLT LINE TRANSFORMERS

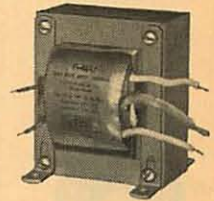
Type No.	Primary Matching Impedance	Secondary Load Impedance	Output Watts
S-131X	1250/625/312	8/4	2
S-132X	1000/500/250/125	16/8/4	5
S-133Z	500/250/125/62.5	16/8/4	10

## MATCHING TRANSFORMERS FOR 25 OR 70.7 VOLT LINE

S-129Z	70.7V line to 25V line or, 25V line to 70.7V line	30	20-15000
S-130Z	70.7V line to 25V line or, 25V line to 70.7V line	10	20-15000

## Special TRANSCIEVER Transformers (Voice Frequencies)

Type No.	Application	Primary Impedance	Secondary Impedance
A-21X	S.B. mike or plate to grid (2 primaries)	100 10000	100000
A-23X	Tube to line and hi-impedance phones.	10000	50 and 2000



Case U

## INSTRUMENTATION GEOFORMERS

### LOW FREQUENCY TRANSISTOR TRANSFORMERS

Type No.	Impedance Ohms		Turns Ratio	Min. pri. Ind. @ 100MV-60 cy. With No Unbalanced D.C. Current	D. C. Resistance (Ohms)		Frequency Response in Cycles Primary Signal of 1 Volt Unbalanced D.C. Secondary Current of									Shielding	Case Mtg.	Wt.
	Pri.	Sec.			Pri.	Sec.	1 Ma.			2 Ma.			3 Ma.					
							-3DB	-1DB	-3DB	-1DB	-3DB	-1DB	-3DB	-1DB				
G-18	1000 or 250	125 or 31	2.83:1	60.	500	44	5 to 20000	8 to 7000	5 to 20000	8 to 7000	6 to 20000	9 to 7000	7 to 20000	10 to 7000	P1-H GP-1F	3.2 oz.		
G-19	1000 or 250	1000 or 250	1:1	65.	540	230	12 to 7000	15 to 3800	12 to 7000	15 to 3800	12 to 7000	15 to 3800	20 to 7000	40 to 3800	P1-H GP-2L	5¼ oz.		
G-30	1000 CT.	2500 CT.	1:1.58	20.	350	1800	20 to 8000	40 to 4200	22 to 8000	45 to 4200	40 to 8000	75 to 4200	70 to 8000	160 to 4200	P1 GP-1F	3.2 oz.		

### CHOPPER INPUT TRANSFORMERS

Triad Chopper Input Transformers provide exceedingly close balance between the two halves of the primary winding... minimum noise in microvolt ranges of input signals is assured with Triad's special core treatment techniques. For demanding transistor and tube applications, Triad's special design capabilities have an outstanding record. For special applications, consult Triad.

Type No.	Turns Ratio	Minimum Primary Inductance @ 1V-60	Maximum Primary Volts @ 60	Primary Matching Impedance In Ohms	Secondary Matching Impedance In Ohms	D.C. Resistance In Ohms		Stray Fields Shield	Case and Mounting	Weight
G-20‡ G-20H‡	1:8	120 h.	25	10,000 CT or 2500	640,000 CT	370	21,000	P5-H P1-H	GP-4T GP-2L	11½ oz. 5¼ oz.
G-21‡ G-21TS‡	4:1	1200 h.	84	20,000 CT	12,500 CT	4000	1300	P1-H P5-H	GP-2L GP-4T	5¼ oz. 11½ oz.
G-22H‡ G-22‡	1:4	1000 h.	90	50,000 CT	800,000 CT	2200	19,000	P1-H P5-H	GP-3R GP-5W	7¾ oz. 1 lb.
G-23‡ G-23TS‡	6.32:1	1000 h.	75	40,000 CT	1000 CT	4400	160	P1-H P5-H	GP-2L GP-4T	5¼ oz. 11½ oz.
G-24‡	1:1	400 h. Low capacity coupling less than .02 µF between windings.	19.5	40,000 CT	40,000 CT	1625	1625	P5	GP-5S	1 lb.
G-25‡ G-25TS‡	2:1	800 h.	70	40,000 CT or 10,000 CT	10,000 CT	3200	2200	P1-H P5-H	GP-2L GP-4T	5¼ oz. 11½ oz.

‡Static Shield

# TRIAD DISTRIBUTOR DIVISION

## TOROIDS



A DIVISION OF LITTON INDUSTRIES



Triad toroids may be ordered with standard leads in strong plastic coating, or epoxy molded encapsulated, per Specification MIL-T-27A; TF5RX20ZZ. To specify molded toroids with gold-plated fixed terminals, an 'A' should be added to the full type number; for example, EM-001A.

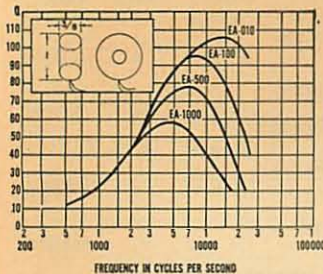


A

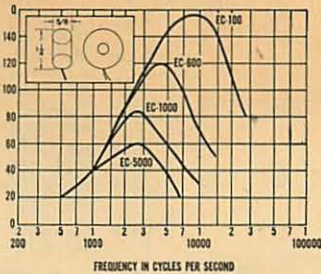
### TOROIDS



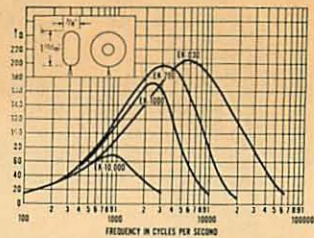
#### EA SERIES



#### EC SERIES



#### EK SERIES



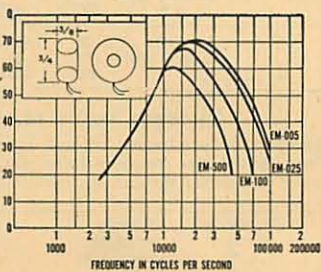
Type No.	Ind.	Res-Ohms Average	D.C.-Ma. for 5% Ind. drop
EA-001	1 mh	.40	270
EA-002	2 mh	.58	192
EA-003	3 mh	.73	157
EA-004	4 mh	.85	135
EA-005	5 mh	1.20	121
EA-007	7 mh	1.42	102
EA-010	10 mh	2.20	86
EA-015	15 mh	3.40	70
EA-020	20 mh	5.05	60
EA-025	25 mh	5.80	54
EA-030	30 mh	7.90	50
EA-040	40 mh	11.40	43
EA-050	50 mh	12.80	38
EA-070	70 mh	19.00	32
EA-100	100 mh	30.00	27
EA-150	150 mh	46.00	22
EA-200	200 mh	52.00	19
EA-250	250 mh	73.00	17
EA-300	300 mh	80.00	16
EA-400	400 mh	115.00	14
EA-500	500 mh	126.00	12
EA-600	600 mh	178.00	11
EA-700	700 mh	193.00	10
EA-1000	1000 mh	297.00	8.6

Type No.	Ind.	Res-Ohms Average	D.C.-Ma. for 5% Ind. drop
EC-001	1 mh	.40	520
EC-002	2 mh	.56	368
EC-003	3 mh	.70	300
EC-004	4 mh	.82	260
EC-005	5 mh	.92	233
EC-007	7 mh	1.05	195
EC-010	10 mh	1.30	165
EC-015	15 mh	1.60	134
EC-020	20 mh	1.85	116
EC-030	30 mh	2.85	95
EC-040	40 mh	4.20	82
EC-050	50 mh	4.60	74
EC-070	70 mh	4.60	74
EC-100	100 mh	8.00	52
EC-200	200 mh	25.00	37
EC-250	250 mh	28.00	33
EC-300	300 mh	38.20	30
EC-400	400 mh	44.00	26
EC-500	500 mh	63.50	23
EC-600	600 mh	71.00	21
EC-700	700 mh	80.00	19.5
EC-1000	1000 mh	113.00	16.5
EC-1500	1500 mh	175.00	13.5
EC-2000	2000 mh	243.00	11.6
EC-3000	3000 mh	370.00	9.5
EC-4000	4000 mh	435.00	6.2
EC-5000	5000 mh	645.00	7.4
EC-7000	7000 mh	780.00	6.2
EC-10000	10000 mh	1190.00	5.2

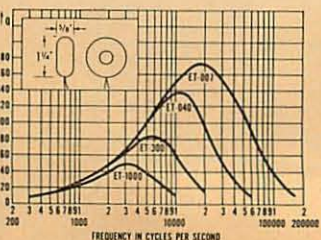
Type No.	Ind.	Res-Ohms Average	D.C.-Ma. for 5% Ind. drop
EK-010	10 mh	.92	262
EK-020	20 mh	1.30	184
EK-030	30 mh	1.65	150
EK-040	40 mh	1.90	130
EK-050	50 mh	3.50	116
EK-060	60 mh	4.00	106
EK-080	80 mh	4.60	92
EK-100	100 mh	5.20	82
EK-120	120 mh	5.50	75
EK-150	150 mh	6.20	67
EK-200	200 mh	7.50	58
EK-250	250 mh	10.30	52
EK-300	300 mh	12.00	47
EK-400	400 mh	16.50	41
EK-500	500 mh	23.60	37
EK-700	700 mh	30.00	31
EK-1000	1000 mh	45.00	26
EK-1500	1500 mh	67.00	21
EK-2000	2000 mh	100.00	18.4
EK-2500	2500 mh	108	16.5
EK-3000	3000 mh	151	15
EK-4000	4000 mh	175	13
EK-5000	5000 mh	250	11.6
EK-7000	7000 mh	380	9.8
EK-10000	10000 mh	500	8.2
EK-20000	20000 mh	1000	5.8
EK-30000	30000 mh	1500	4.1
EK-40000	40000 mh	1850	4.1

Type No.	Ind.	Res-Ohms Average	D.C.-Ma. for 5% Ind. drop
EM-001	1 mh	2.8	150
EM-002	2 mh	4.1	108
EM-003	3 mh	5.1	87
EM-004	4 mh	6.0	76
EM-005	5 mh	6.8	68
EM-007	7 mh	8.2	57
EM-010	10 mh	10	48
EM-015	15 mh	12.5	39
EM-020	20 mh	14.5	34
EM-025	25 mh	16.5	30
EM-030	30 mh	18	27.6
EM-040	40 mh	27	24
EM-050	50 mh	30	22
EM-060	60 mh	40	19.5
EM-070	70 mh	43	18
EM-100	100 mh	66	15
EM-150	150 mh	100	12.5
EM-200	200 mh	115	11
EM-250	250 mh	167	9.6
EM-300	300 mh	180	8.8
EM-400	400 mh	265	7.6
EM-500	500 mh	295	7
EM-700	700 mh	440	5.8
EM-1000	1000 mh	650	4.8

#### EM SERIES



#### ET SERIES



Type No.	Ind.	Res-Ohms Approx.	D.C.-Ma. for 5% Ind. drop
ET-001	1 mh	.57	680
ET-002	2 mh	.82	480
ET-003	3 mh	.98	396
ET-004	4 mh	1.10	342
ET-005	5 mh	1.35	306
ET-007	7 mh	1.50	260
ET-010	10 mh	2	217
ET-015	15 mh	3	177
ET-020	20 mh	4.3	153
ET-025	25 mh	4.8	137
ET-030	30 mh	6.9	125
ET-040	40 mh	7.2	108
ET-050	50 mh	8	97
ET-060	60 mh	15.5	88
ET-070	70 mh	16.8	82
ET-100	100 mh	26.0	68
ET-150	150 mh	38.5	56
ET-200	200 mh	44.5	48
ET-250	250 mh	64	43
ET-300	300 mh	72	40
ET-400	400 mh	103	34
ET-500	500 mh	118	31
ET-700	700 mh	173	26
ET-1000	1000 mh	245	22

■Discontinued item, available until stock depleted.

# TRIAD DISTRIBUTOR DIVISION



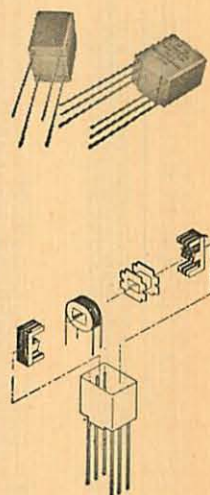
A DIVISION OF LITTON INDUSTRIES



## RED SPEC TRANSISTOR TRANSFORMERS

Type No.	Application Type	MIL-T-27A Designation	Primary Impedance	D.C. Res. Pri. Ohms	Max. Unbal. Pri. D.C. Ma.	Secondary Impedance	Max. Power MW
SP-4	Input	TF5RX16ZZ	200000 c.t.	5300	0	1000 c.t.	10
SP-5	Input	TF5RX16ZZ	50000 c.t.	3800	0	1000 c.t.	25
SP-7	Input	TF5RX16ZZ	200000	5300	0	1000	10
SP-11	Interstage	TF5RX13ZZ	25000	1700	.5	1000	40
SP-13	Interstage	TF5RX13ZZ	25000 c.t.	1700	.5	1000 c.t.	40
SP-15	Interstage	TF5RX13ZZ	10000 c.t.	1050	1	1500 c.t.	50
SP-20	Driver	TF5RX13ZZ	10000 c.t.	1050	1	1200 c.t.	50
SP-21	Driver	TF5RX13ZZ	10000 c.t.	1050	1	2000 c.t.	50
SP-22	Driver	TF5SX13ZZ	10000	1050	1	2000 c.t./500†	50
SP-29	Driver	TF5RX13ZZ	10000 c.t.	1050	1	500 c.t.	50
*SP-32	Output	TF5RX17ZZ	500	60	3	50	50
SP-33	Output	TF5RX17ZZ	1000	145	3	50	50
SP-34	Output	TF5RX17ZZ	600	70	3	3.2	50
SP-35	Output	TF5RX13ZZ	1200	120	2	3.2	50
SP-36	Output	TF5RX13ZZ	10000	1160	1	3.2	50
SP-42	Output	TF5RX17ZZ	150 c.t.	18	10	12	50
SP-43	Output	TF5RX17ZZ	300 c.t.	38	7	12	50
SP-44	Output	TF5RX17ZZ	600 c.t.	75	4.5	12	50
SP-46	Output	TF5RX17ZZ	1000 c.t.	120	3.5	12	50
SP-47	Output	TF5RX13ZZ	1500 c.t.	180	3	12	50
SP-47	Output	TF5RX13ZZ	7500 c.t.	820	1	12	50
SP-49	Output	TF5RX17ZZ	300 c.t.	37	7	600	50
SP-50	Output	TF5RX17ZZ	500 c.t.	60	3	600	50
SP-51	Output	TF5RX17ZZ	900 c.t.	100	4	600	50
SP-52	Output	TF5RX13ZZ	1500 c.t.	170	3	600	50
SP-59	Output	TF5RX17ZZ	120 c.t.	15	10	3.2	50
SP-60	Output	TF5RX17ZZ	320 c.t.	40	6	3.2	50
SP-61	Output	TF5RX17ZZ	600 c.t.	70	4.5	3.2	50
SP-62	Output	TF5RX17ZZ	800 c.t.	100	4	3.2	50
SP-63	Output	TF5RX13ZZ	1200 c.t.	125	3	3.2	50
SP-64	Output	TF5RX13ZZ	1600 c.t.	190	2.5	3.2	50
SP-65	Output	TF5RX13ZZ	8000 c.t.	820	1	3.2	50
SP-66	Output Isolation	TF5RX13ZZ	10000 c.t.	1000	1	10000 c.t.	50
SP-67	Output Isolation	TF5RX17ZZ	600 c.t.	73	3	600 CT.	50
SP-68	Output Isolation	TF5SX13ZZ	10000	1000	1	10000 c.t./2500†	50
SP-69	Output Isolation	TF5SX17ZZ	600	72	3	600 c.t./150†	50
SP-106	Choke	TF5RX20ZZ	6 hy.	1700	2		
SP-107	Choke	TF5RX20ZZ	1.25 hy.	180	2		
SP-108	Choke	TF5RX20ZZ	3.5 hy.	1100	2		
SP-117	Choke	TF5RX20ZZ	.9HY	110	2		
SP-118	Choke	TF5RX20ZZ	.3 hy.	42	4		
SP-128	Choke	TF5RX20ZZ	.1HY	15	5		
SP-310	Magnetic shielding case						

CT For Center Tap. †Split secondary



## Sub-miniature Encapsulated TOROIDAL INDUCTORS

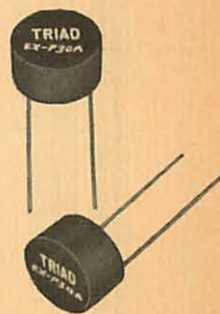
Triad sub-miniature toroidal inductors, designed for quick, easy printed-circuit board mounting, are now stocked for immediate delivery in a range of standard ratings from 50 micro-henries to 500 milli-henries. Many uses, especially in airborne telemetering applications incorporating Triad's sub-miniature filters FL-384 through FL-388. Case size of units is  $\frac{1}{4}$  inch diameter by  $\frac{1}{4}$  inch high. Providing an optimum combination of high Q and extremely small-size, this series is ideal for printed board, transistor or vacuum tube application.

Triad sub-miniature inductors are toroidally wound on permalloy powdered cores. Encapsulated in high temperature epoxy resin. Weldable or solderable leads of gold plated nickel alloy. Highly resistant to severe acceleration, shock or vibration. Manufactured to MIL-T-27A, Grade 5 Class S (MIL type TF5SX20ZZ).

NOTE: Ma. DC maximum is for approximately 5% drop in inductance. Those figures marked \* will give less than 5% inductance drop but should not be exceeded under operating conditions.

Inductance tolerance of EX-P05A through EX-P50A is  $\pm 5\%$ ; EX-001A through EX-500A is  $\pm 2\%$ .

Cat. No.	Inductance (0 DC)	DCR (ohms) $\pm 25\%$	Maximum Ma. DC
EX-P05A	50 $\mu$ h	1.0	150*
EX-P10A	100 $\mu$ h	1.4	150*
EX-P20A	200 $\mu$ h	1.9	150*
EX-P30A	300 $\mu$ h	2.3	150*
EX-P50A	500 $\mu$ h	3.0	150*
EX-001A	1 mh	4.3	150*
EX-002A	2 mh	8	110
EX-003A	3 mh	6.5	60
EX-005A	5 mh	11	47
EX-010A	10 mh	15.6	33
EX-020A	20 mh	28	23
EX-030A	30 mh	42	19
EX-050A	50 mh	48	14
EX-100A	100 mh	86	10
EX-200A	200 mh	139	6
EX-300A	300 mh	206	5
EX-400A	400 mh	310	4.5
EX-500A	500 mh	415	4



Prices subject to change without notice. Net prices shown for 1-9 quantity. For 1 to 249 pieces, see your stocking Triad Distributor for quantity discount schedule. For 250 or more pieces, contact your Triad Representative or call the factory.

# TRIAD DISTRIBUTOR DIVISION

## PRICE INDEX BY TYPE NUMBER

Type No.	Net Price	Type No.	Net Price	Type No.	Net Price	Type No.	Net Price	Type No.	Net Price	Type No.	Net Price	Type No.	Net Price		
A-1X	2.23	A-200P	15.00	D-62	5.82	D-163	6.62	D-630	7.68	EC-1000	5.27	EM-030	4.55	EX-500A	8.70
A-3X	2.62	A-202P	20.85	D-63	6.40	D-164	7.05	D-631	7.86	EC-1000A	6.77	EM-030A	6.02	F-1X	2.77
A-4X	2.97	A-210P	10.86	D-64	7.50	D-165	7.41	D-632	7.86	EC-1500	5.44	EM-040	4.98	F-1X	4.55
A-5X	2.67	A-300X	5.00	D-65	8.44	D-166	6.45	D-638	7.72	EC-1500A	7.10	EM-040A	6.43	F-5U	6.38
A-6X	2.57	A-301X	4.40	D-66	9.60	D-167	6.10	EA-001	3.45	EC-2000	5.50	EM-050	4.55	F-6X	3.78
A-7J	4.78	A-302X	4.35	D-67	11.65	D-168	5.35	EA-001A	5.07	EC-2000A	7.15	EM-050A	6.02	F-7X	3.57
A-9J	7.67	A-304X	3.80	D-68	9.05	D-169	8.40	EA-002	3.60	EC-3000	5.90	EM-060	4.48	F-8X	5.39
A-10J	8.68	A-305X	3.60	D-69	7.28	D-170	6.77	EA-002A	5.00	EC-3000A	7.60	EM-060A	5.93	F-9A	8.89
A-11J	10.90	C-1X	1.87	D-70	8.40	D-171	7.33	EA-003	3.52	EC-4000	5.32	EM-070	5.32	F-9U	7.93
A-12J	9.52	C-2X	1.65	D-71	7.20	D-172	8.49	EA-003A	5.12	EC-4000A	7.10	EH-070A	6.43	F-10U	10.07
A-13J	10.12	C-3X	2.10	D-72	7.50	D-173	6.77	EA-004	3.68	EC-5000	5.02	EM-100	5.33	F-11U	10.50
A-21X	2.77	C-4X	1.77	D-73R	8.57	D-174	7.60	EA-004A	5.35	EC-5000A	6.78	EM-100A	7.15	F-12X	4.62
A-23X	2.85	C-5X	2.34	D-74	7.14	D-175	8.40	EA-005	3.82	EC-7000	4.83	EM-150	4.18	F-13X	2.45
A-31X	2.73	C-6X	2.04	D-75	8.40	D-176	2.85	EA-005A	5.47	EC-7000A	6.77	EM-150A	5.57	F-14X	2.85
A-33X	3.88	C-7X	2.67	D-76R	8.22	D-177	7.50	EA-007	4.35	EC-10000	8.69	EM-200	5.50	F-14Z	2.85
A-35A	6.18	C-8X	2.50	D-77R	8.22	D-178	7.83	EA-007A	4.35	EC-10000A	10.49	EM-200A	7.95	F-15U	7.00
A-39A	6.22	C-9X	2.34	D-78	6.96	D-179	6.88	EA-10	3.78	EK-010	6.15	EM-250	4.40	F-16X	4.73
A-40J	8.44	C-10X	3.21	D-79	7.57	D-180	7.88	EA-010A	5.32	EK-010A	8.90	EM-250A	5.73	F-17U	11.74
A-41J	9.15	C-11X	3.18	D-80	7.95	D-181	9.49	EA-015	3.83	EK-020	6.40	EM-300	5.17	F-18A	7.05
A-42J	9.15	C-12A	5.00	D-81	7.27	D-182	7.20	EA-015A	5.45	EK-020A	9.17	EM-300A	6.55	F-18X	5.02
A-42Z	3.60	C-12X	3.39	D-82	9.32	D-183	8.40	EA-020	3.17	EK-030	6.27	EM-400	5.93	F-19X	4.23
A-50J	6.55	C-13X	3.24	D-83R	5.95	D-184	8.22	EA-020A	5.12	EK-030A	9.02	EM-400A	7.38	F-20U	7.82
A-51X	2.22	C-14A	5.43	D-84	9.35	D-185	8.70	EA-025	3.88	EK-040	6.67	EM-500	4.73	F-21A	9.00
A-52J	7.73	C-14X	3.33	D-85	9.44	D-186	7.80	EA-025A	5.60	EK-040A	9.24	EM-500A	6.15	F-22A	12.50
A-53X	3.18	C-15A	5.25	D-86	9.77	D-187	7.65	EA-030	3.35	EK-050	6.27	EM-700	5.93	F-23U	7.77
A-54X	2.73	C-15X	3.68	D-87	8.18	D-188R	7.88	EA-030A	5.38	EK-050A	9.02	EM-700A	7.60	F-24U	6.68
A-55J	8.00	C-16A	7.68	D-88	7.40	D-189	9.05	EA-040	3.40	EK-060	7.15	EM-1000	5.62	F-25X	3.17
A-56J	7.15	C-17X	2.93	D-89R	9.55	D-190 Kit	7.73	EA-040A	5.55	EK-060A	9.95	EM-1000A	6.90	F-26X	3.65
A-57J	8.28	C-18A	8.49	D-90	8.45	D-191	8.60	EA-050A	5.48	EK-080	7.17	ET-001	4.27	F-27U	11.39
A-58J	7.73	C-19A	11.57	D-91	6.99	D-192	6.98	EA-050	3.45	EK-080A	7.28	ET-001A	5.68	F-28U	14.65
A-64J	5.95	C-20A	12.12	D-92	6.78	D-193	9.32	EA-070	3.57	EK-100	7.07	ET-002	4.27	F-29U	11.52
A-65J	8.89	C-21X	2.38	D-93	6.17	D-194	7.20	EA-070A	6.40	EK-100A	9.95	ET-002A	7.23	F-30A	8.49
A-66J	8.94	C-22A	19.74	D-94R	7.50	D-195	6.50	EA-100	3.65	EK-120	7.62	ET-003	4.00	F-32A	5.82
A-67J	8.90	C-23X	2.48	D-95	7.20	D-196	6.57	EA-100A	5.67	EK-120A	11.07	ET-003A	5.50	F-34A	8.67
A-68J	9.07	C-24X	2.02	D-96	7.50	D-197	6.33	EA-150	3.18	EK-150	6.73	ET-004	4.27	F-36A	10.27
A-69J	8.34	C-25A	6.10	D-97R	6.82	D-198	6.67	EA-150A	5.10	EK-150A	9.14	ET-004A	5.32	F-38A	11.94
A-70J	7.15	C-26X	3.55	D-98R	10.57	D-199	7.35	EA-200	4.15	EK-200	7.14	ET-005	3.40	F-40X	3.39
A-75J	7.73	C-27X	2.10	D-99	7.35	D-200	6.68	EA-200A	6.17	EK-200A	9.99	ET-005A	5.43	F-41X	4.43
A-77J	8.90	C-28X	3.57	D-100	7.22	D-201	6.67	EA-250	4.44	EK-250	7.24	ET-007	4.23	F-42A	6.77
A-78J	8.90	C-29X	2.93	D-101	7.27	D-202	6.98	EA-250A	6.62	EK-250A	9.84	ET-007A	5.60	F-43X	3.84
A-79J	8.60	C-30X	2.17	D-102	7.65	D-203	6.27	EA-300	4.44	EK-300	7.50	ET-010	5.02	F-44X	3.32
A-81X	2.62	C-31A	7.12	D-103	7.50	D-204	6.38	EA-300A	6.22	EK-300A	10.32	ET-010A	6.37	F-45X	3.39
A-83X	2.58	C-32AL	11.57	D-104	6.30	D-205	6.67	EA-400	5.90	EK-400	7.50	ET-015	3.65	F-47U	6.30
A-85X	3.06	C-33A	10.34	D-105	8.90	D-206	7.65	EA-400A	7.95	EK-400A	10.30	ET-015A	5.33	F-48U	9.02
A-89A	6.33	C-34X	2.02	D-106	6.78	D-207	7.92	EA-500	5.23	EK-500	5.85	ET-020	3.77	F-49U	13.55
A-91A	8.45	C-35A	12.00	D-107	8.44	D-208	6.88	EA-500A	7.37	EK-500A	8.22	ET-020A	5.12	F-50X	4.88
A-95X	2.57	C-36X	1.82	D-108	9.90	D-209	8.00	EA-600	3.32	EK-700	5.78	ET-025	3.68	F-51X	4.55
A-96X	3.67	C-38AL	21.62	D-109	6.90	D-210	6.67	EA-600A	5.18	EK-700A	8.45	ET-025A	5.45	F-52X	3.47
A-97K	4.28	C-39A	21.25	D-110	8.28	D-211	7.60	EA-700	5.32	EK-1000	7.72	ET-030	5.98	F-53X	5.48
A-97K	2.38	C-40X	2.67	D-111	8.10	D-212	7.41	EA-700A	7.27	EK-1000A	10.49	ET-030A	7.35	F-60U	6.15
A-97Z	2.50	C-42AL	9.52	D-112	7.68	D-213	7.86	EA-1000	4.37	EK-1500	7.17	ET-040	3.78	F-61U	9.27
A-97Y	5.78	C-43X	4.77	D-113	8.57	D-214	8.94	EA-1000A	5.95	EK-1500A	10.39	ET-040A	5.38	F-62U	23.49
A-98K	5.10	C-45AL	30.74	D-115R	7.17	D-215	8.34	EC-001	3.60	EK-2000	7.88	ET-050	3.78	F-63U	6.43
A-98X	2.68	C-47U	7.48	D-114	8.44	D-216	8.94	EC-001A	5.10	EK-2000A	10.34	ET-050A	5.48	F-64U	6.57
A-99X	3.90	C-48U	9.55	D-116	10.94	D-217	6.57	EC-002	3.72	TK-2500	9.15	ET-060	3.83	F-65U	8.79
A-101U	5.32	C-49U	12.65	D-117	7.02	D-218	8.94	EC-002A	5.33	EK-3000	6.52	ET-060A	5.55	F-66U	27.60
A-102X	3.40	C-50X	4.49	D-118R	7.65	D-219	8.94	EC-003	3.78	EK-3000A	9.62	ET-070	3.48	F-67U	17.72
A-103X	3.93	C-80U	34.52	D-120	7.65	D-220	7.50	EC-003A	5.35	EK-4000	7.15	ET-070A	5.32	F-68U	9.50
A-104X	3.87	CE-1	10.50	D-121	7.72	D-221	8.10	EC-004	3.83	EK-4000A	9.52	ET-100	4.87	F-71U	5.15
A-105X	3.93	CE-4	12.50	D-122	7.10	D-222	11.79	EC-004A	5.45	EK-5000	9.17	ET-100A	5.83	F-72Z	4.52
A-107X	4.74	CL-1	.60	D-122	7.10	D-220	11.79	EC-005	4.02	EK-5000A	9.84	ET-150	4.55	F-79U	24.74
A-108X	3.72	D-2	6.90	D-123	7.88	D-301	11.55	EC-005A	5.00	EK-7000	7.15	ET-150A	6.38	F-80U	39.31
A-109X	3.72	D-11	10.22	D-124	6.11	D-302	11.79	EC-007	4.50	EK-7000A	9.55	ET-200	4.65	F-83A	10.84
A-110X	3.57	D-14R	7.28	D-125	8.94	D-303	9.79	EC-007A	5.62	EK-10000	9.67	ET-200A	6.43	F-84AC	20.27
A-111X	2.73	D-19	7.23	D-126	9.17	D-304	11.55	EC-010	4.15	EK-10000A	12.69	ET-250	4.65	F-90X	3.40
A-112X	3.68	DA-20	3.93	D-127	7.44	D-601	7.80	EC-010A	5.37	EK-20000	12.15	ET-250A	6.43	F-91X	4.00
A-113X	2.98	D-22	7.80	D-128	2.38	D-602	7.52	EC-015	4.60	EK-20000A	15.34	ET-300	4.00	F-92A	7.73
A-113Z	3.43	D-26	7.35	D-129	6.82	D-603	7.65	EC-015A	5.83	EK-25000	8.94	ET-300A	5.68	F-93X	5.48
A-114X	4.78	D-27	7.14	D-130R	4.77	D-604	7.65	EC-020	4.67	EK-25000A	10.60	ET-400	4.00	F-94X	3.22
A-115X	3.40	D-28	6.57	D-131	7.80	D-605	11.07	EC-020A	6.10	EK-30000	12.02	ET-400A	5.68	F-102X	4.77
A-115Z	3.40	D33	7.14	D-132	7.77	D-606	6.98	EC-030	4.07	EK-30000A	15.22	ET-500	4.07	F-104U	9.15
A-116X	3.82	DA-36	3.77	D-133	7.72	D-607	8.28	EC-030A	5.45	EM-001	4.34	ET-500A	5.67	FL-381	3.90
A-117X	3.67	DA-37	2.49	D-134	8.94	D-608	7.50	EC-040	4.23	EK-40000	9.05	ET-700	4.15	FL-384	62.25
A-118X	3.65	D-40	9.95	D-135	2.02	D-609	6.82	EC-040A	6.02	EM-001A	11.44	ET-1000A	5.83	FL-385	61.42
A-119X	3.23	D-41	8.62	D-136	5.23	D-610	7.80	EC-050	4.60	EM-002	5.68	ET-1000A	5.27	FL-386	61.42
A-120X	2.40	D-42	7.40	D-137	7.23	D-611	7.93	EC-050A	6.38	EM-002A	4.34	ET-1000A	7.00	FL-387	61.42
A-120Z	2.57	D-44	6.65	D-138	7.68	D-612	7.80	EC-070	4.62	EM-003	5.85	EX-P05A	8.10	FL-388	63.62
A-122X	2.16	D-45R	6.40	D-139	6.18	D-613	7.77	EC-070A	6.40	EM-003A	4.34	EX-P10A	8.10	FL-389	41.39
A-131X	3.67	D-46	9.32												

# TRIAD DISTRIBUTOR DIVISION



A DIVISION OF LITTON INDUSTRIES



## PRICE INDEX BY TYPE NUMBER

Type No.	Net Price	Type No.	Net Price	Type No.	Net Price	Type No.	Net Price	Type No.	Net Price	Type No.	Net Price	Type No.	Net Price		
G-19	20.00	G-394	18.91	HSM-207	26.40	HS-475	25.62	N-35M	15.79	■PL-82E	11.39	R-38A	18.18	R-111B	8.34
G-19TS	24.53	G-401	19.60	HSM-208	27.90	JAF-1	13.21	N-50M	23.94	PL-82H	12.69	R-38BC	20.45	R-112A	8.34
G-20	28.90	G-435	19.60	HSM-212	34.56	JAF-2	13.74	N-51X	4.17	PL-82P	12.02	R-39A	18.05	R-112B	8.23
■G-20H	23.65	G-534TS	25.85	HSM-216	40.50	JAF-3	13.74	N-52M	28.07	PL-83E	12.17	R-39BC	18.90	R-113A	7.57
G-21	23.65	■G-437	19.60	HSM-281	54.60	JAF-5	13.74	N-35M	15.79	PL-83H	12.92	R-40BC	23.65	R-113B	7.72
G-21TS	28.90	G-437TS	25.85	HSM-219	49.95	JAF-11	12.84	N-50M	23.94	PL-83P	12.27	R-41C	15.12	R-114A	9.95
G-22	31.22	G-455	19.60	HSM-223	11.61	JF-12	13.21	N-52M	28.07	PL-84E	11.82	R-42BC	14.49	R-114B	9.95
G-22H	25.85	■G-475	20.32	HSM-224	18.32	JAF-13	13.74	N-51X	4.17	PL-84H	13.07	R-43C	12.22	R-115A	7.80
G-23	23.65	■G-493	17.65	HSM-225	14.28	JAF-14	13.74	N-53M	9.32	■PL-84P	12.42	R-45C	13.47	R-115B	7.68
■G-23TS	28.90	G-500	32.80	HSM-226	16.32	JAF-15	13.74	N-54M	12.69	■PL-124E	11.39	R-46A	25.12	R-116A	11.07
G-24	37.83	G-501	32.80	HSM-227	19.44	JAF-21	13.21	N-55M	17.82	PL-124H	12.77	R-49BC	20.32	R-116B	11.07
G-25	23.65	G-502	32.80	HSM-228	23.19	JAF-22	13.21	N-56M	34.27	PL-139E	9.80	R-49BS	21.27	R-118A	12.35
G-25TS	28.90	GF-600	36.84	HSM-229	21.96	JAF-23	13.74	N-57M	35.84	PL-139H	10.88	R-50A	26.06	R-118B	12.45
G-30	17.89	GF-601	47.87	HSM-230	15.72	JAF-24	14.30	N-59M	48.66	PL-139M	11.75	R-50BC	24.60	R-120A	12.45
■G-30TS	24.40	GF-602	33.25	HSM-231	20.64	JAF-25	14.15	N60SC	104.79	PL-140E	11.39	R-51BC	14.17	R-120B	12.74
G-31	19.60	■HC-25	21.25	HSM-232	22.41	JAF-26	14.30	N-62AC	54.30	PL-140H	12.77	R-52BC	17.15	R-121A	13.34
G-32	24.53	HC-115	29.25	HSM-233	14.00	JAF-31	14.18	N-64AC	27.39	PL-139E	9.80	R-54X	4.35	R-121B	11.65
G-33	21.20	HC-300	38.10	HSM-234	25.80	JAF-32	14.10	N-66A	15.22	PL-139H	10.88	R-56A	6.23	R-112A	15.19
G-34	27.89	HS-1	28.58	HSM-235	33.30	JAF-33	14.18	N-67A	10.39	PL-139M	11.75	R-58A	15.49	R-123HA	12.60
G-36	16.81	HS-3	31.10	HSM-236	21.54	JAF-34	14.10	N-68X	5.67	PL140E	11.39	R-60BC	20.39	R-124BC	11.90
■G-36TS	25.85	HS-4	28.40	HSM-237	16.49	JAF-35	14.10	N-73A	10.60	PL-140H	12.77	R-61BC	22.29	R-125BC	15.15
G-40TS	26.89	■HS-8	28.58	HSM-238	24.58	JAF-101	12.61	N-74A	10.45	PL-140M	13.85	R-62BC	26.82	R-126A	15.44
G-48	16.39	HS-11	21.68	HSM-239	18.00	JAF-102	12.70	N-469A	6.05	PL-146E	11.39	R-63BC	16.15	R-127A	15.07
G-48TS	25.85	HS-14	22.52	HSM-240	19.44	JO-1	13.38	N-470A	8.91	PL-146H	12.72	R-64BC	14.58	R-128BC	16.17
G-51	19.60	HS-15	26.65	HSM-241	33.00	JO-2	13.92	N-471A	12.15	PL-146M	13.84	R-65BC	14.35	R-129BC	15.22
G-51A	19.60	HS-23	21.73	HSM-245	39.90	JO-3	14.04	NM-1	.60	R-2C	4.50	R-66BC	16.02	R-131A	17.02
■G-52	20.80	HS-25	21.73	HS-247	45.99	JO-5	13.92	NM-2	.72	R-3A	6.28	R-67BC	16.15	R-132BC	15.55
G-53	20.80	HS-27	19.70	HSM-248	26.10	JO-11	13.32	NW-3	.78	R-4A	6.15	R-68A	9.00	R-133A	14.62
G-53A	20.80	HS-29	27.50	HSM-270	20.52	JO-12	13.74	NW-4	.78	R-4B	6.33	R-69BC	16.07	R-134A	15.40
G-54	20.80	HSM-31	21.08	HSM-271	26.10	JO-13	13.74	NW-5	.78	R-5A	7.40	R-70A	11.10	R-135BC	15.60
G-57	16.81	HS-32	27.50	HSM-272	36.96	JO-21	13.74	NW-6	.72	R-5B	7.45	R-71A	17.72	R-136BC	15.84
G-58	25.85	HS-35	19.51	HS-273P	17.10	JO-22	13.74	NW-7	.60	R-6P	7.17	R-72A	11.77	R-138A	15.74
G-64	16.39	HS-50	23.23	HSM-301	11.82	JO-23	13.92	NW--10	.60	R-6B	7.50	R-73B	7.45	R-139A	15.45
G-65	16.39	HS-52	24.02	HSM-302	11.04	J-31	13.98	NW-11	.78	R-7A	8.44	R-74BC	17.99	R-200A	13.38
■G-72	21.20	HS-54	28.58	HS-303	11.34	JO-101	12.60	NW-18	.60	R-7B	8.44	R-75BA/BC	16.07	R-201A	13.35
G-80	24.58	HS-56	25.82	HSM-305	12.24	JZ-1	11.79	NW-19	.60	R-8A	8.28	R-76BC	17.92	R-202A	13.31
G-84	21.20	HS-58	30.32	HSM-307	15.15	JZ-5	12.13	NW-22	.82	R-8B	8.34	R-77BC	19.50	R-203A	11.82
G-85	21.20	HS-60	19.51	HSM-309	16.32	JZ-7	11.79	NW-21	.67	R-9A	8.67	R-77BS	21.45	R-204A	12.87
■G-92	22.06	HS-61	20.65	HSM-315	18.84	JZ-13	11.79	NW-23	.72	R-9B	9.05	R-78BC	16.90	R-205A	12.91
G-101	19.60	HS-66	23.18	HSM-319	26.01	JZ-15	11.79	NW-24	.72	R-10A	10.69	R-79BA	13.19	R-675A	17.57
G-101TS	23.65	HS-71	14.41	HS-331	8.16	JZ-25	11.47	NW-25	.67	R-10B	9.27	R-80BA/BC	18.84	S-1X	1.98
G-135	19.60	HS-73	15.43	HS-333	9.09	JZ-26	11.47	P-1A	9.12	R-11A	10.34	R-81BC	21.44	S-2X	2.45
G-135	19.60	HS-75	18.19	HS-335	11.49	K-20 Kit	4.50	P-3A	11.74	R-11B	10.22	R-81BS	21.42	S-3X	2.38
■G-155	19.60	HS-77	21.20	HS-339	12.48	K-100	20.00	P-5A	12.50	R-12A	10.67	R-83A	14.24	S-4X	2.57
G-183	24.92	HSM-79	19.51	HS-341	13.32	K-101	25.00	P-7A	14.65	R-12B	10.72	R-84K	6.15	S-5X	2.62
G-201	19.60	HSM-80	21.31	HS-400	13.31	K-102	33.00	P-9A	25.46	R-14A	12.40	R-85A	15.99	S-5Z	2.72
G-202	20.00	HSM-81	23.60	HS-401	17.64	K-103	49.00	P-11A	12.50	R-14B	11.45	R-86BA	12.48	S-6X	1.98
G-235	19.60	HSM-82	23.60	HS-402	15.96	K-104	77.00	P-14A	19.12	R-16A	13.00	R-87BC	14.64	S-6Z	2.17
G-250	19.60	HSM-84	23.60	HS-404	21.00	K-105	97.00	P-15AL	22.12	R-16B	13.69	R-88A	15.79	S-7X	2.02
G-255	19.60	HSM-85	23.60	HS-405	21.90	M-1X	2.52	P-16AL	45.60	R-17A	15.39	R-89BC	16.15	S-8X	1.90
G-266	20.50	■HSM-91	39.33	HS-407	26.34	M-3X	4.50	P-17AL	25.22	R-18A	12.66	R-90BC	16.07	S-8X	2.02
G-274	20.41	HSM-94	43.65	HS-409	22.38	M-4Z	2.22	P-18AL	52.20	R-18B	13.79	R-91HA	13.95	S-9X	2.33
■G-275	20.50	■HSM-95	43.65	HS-413	27.30	M-5Z	4.11	P-20AL	51.75	R-19A	17.94	R-92A	13.57	S-9Z	2.62
■G-276	20.50	■HS-97	82.26	HS-415	34.20	M-6X	4.77	PR-21AL	50.67	R-20A	12.50	■R-93A	16.17	S-11X	1.98
■G-283	24.92	■HSM-181	23.60	HS-417	37.44	M-7AL	11.22	P-213AL	19.50	R-20B	13.52	R-94H	26.11	S-11Z	2.10
G-284	20.00	HSM-182	23.60	HS-425	13.32	M-8AL	14.77	P-215AL	21.65	R-21A	15.82	R-104A	5.48	S-12X	1.90
G-285	20.00	HSM-184	30.02	HS-427	16.02	M-12AL	17.89	P-216AL	43.32	R-21B	14.79	R-104B	5.78	S-12Z	1.90
G-301	19.30	HSM-186	30.02	HS-433	17.76	M-15A	9.05	P-217AL	24.67	R-22A	7.52	R-105A	6.90	S-13X	2.27
G-306	19.30	HSM-187	30.02	HS-435	19.86	MB-20	.72	P-218AL	48.30	R-22B	7.85	R-105B	7.02	S-13Z	2.27
G-313	19.30	HSM-189	30.02	HS-436	11.40	MB-31	.45	PL-4	10.68	R-23B	6.15	R-106A	6.33	S-14Z	2.02
G-315	19.30	HSM-192	45.04	HS-438	16.38	MK-1	3.95	P-220AL	41.68	R-24A	16.74	R-106B	6.65	S-15X	2.73
G-335	18.91	HSM-190	30.02	HS-441	27.15	MK-2	3.95	PL-5	12.14	R-24B	16.57	R-107A	7.60	S-10X	2.23
G-336	18.91	■HSM-193	45.04	HS-442	19.08	MK-3	4.95	PL-6	12.14	R-25A	25.34	R-107B	7.62	S-16X	2.02
■G-350	18.91	HSM-200	16.98	HS-443	16.08	MK-4	4.95	PL-10	1.78	R-26A	18.90	R-108A	7.28	S-17X	2.10
G-355	18.91	HSM-201	21.66	HS-444	26.70	N-3M	7.82	■PL-80E	10.94	R-27A	37.29	R-108B	7.40	S-18X	2.33
G-388	19.30	HSM-202	14.75	HS-445	16.22	N-4M	7.88	■PL-80H	12.14	R-28A	25.86	R-109A	9.17	S-18Z	2.35
G-389	19.30	HSM-203	22.86	HS-470	13.74	N-5M	11.55	■PL-80P	11.52	R-29A	5.50	R-109B	7.17	S-19Z	3.12
■G-391	18.91	HSM-205	24.42	HS-471	14.82	N-7M	18.52	■PL-81E	11.47	R-30X	4.89	R-110A	11.82	S-20X	1.85
				HS-472	18.60	N-9M	36.33	PL-81H	12.25	■R-35A	16.85	R-110B	8.85	S-20Z	1.85
				HS-474	22.85	N-11M	50.59	PL-81P	11.67	R-37BC	21.94	R-111A	8.34	■S-21A	4.72

†New item

■Discontinued item. Available until supply is exhausted

Prices subject to change without notice. Net prices shown for 1-9 quantity. For 1 to 249 pieces, see your stocking Triad Distributor for quantity discount schedule. For 250 or more pieces, contact your Triad Representative or call the factory.



# TRIAD DISTRIBUTOR DIVISION

A DIVISION OF LITTON INDUSTRIES



## PRICE INDEX BY TYPE NUMBER

Type No.	Net Price	Type No.	Net Price	Type No.	Net Price	Type No.	Net Price	Type No.	Net Price	Type No.	Net Price	Type No.	Net Price	Type No.	Net Price
S-21Z	4.05	S-64X	2.40	SP-36	6.32	T-14X	4.00	TY-44X	4.23	TY-92	15.50	WLC-8A	1.80	Y-41	6.90
S-22A	6.27	S-65X	2.57	SP-42	7.00	T-15X	4.11	TY-45X	4.78	TY-93	18.07	WLC-9	1.88	Y-41-2	8.55
S-23X	2.15	S-66X	2.57	SP-43	6.50	T-20X	3.68	TY-46X	2.45	TY-94	15.96	WLC-10	1.59	Y-41-3	7.68
S-24A	6.77	S-67X	2.27	SP-44	7.02	T-21X	3.45	TY-47X	4.67	TY-99	13.45	WLC-11	2.05	Y-42-2	8.73
S-25Z	4.52	S-68Z	3.78	SP-46	7.12	T-22X	3.45	TY-48X	4.50	TY-100	20.62	WLC-12	1.38	Y-44	5.95
S-26X	2.22	S-69Z	5.35	SP-47	7.38	T-23X	4.48	TY-49X	3.28	TY-101	19.67	WLC-17	1.41	Y-44-1	8.10
S-27A	5.85	S-70Z	3.83	SP-48	6.82	T-24X	3.72	TY-50X	6.28	TY-102	18.90	WLC-21	1.33	Y-45	7.27
S-28X	3.90	S-71Z	5.10	SP-49	5.38	T-25X	3.35	TY-51X	4.85	TY-200X	5.55	WLC-23	1.33	Y-45-2	8.12
S-29X	4.50	S-72Z	4.20	SP-50	6.67	T-26X	3.40	TY-52X	5.35	TY-201TZ	5.25	WLC-25	1.52	Y-46	5.95
S-30X	2.10	S-73X	4.00	SP-51	6.28	T-31X	4.23	TY-53X	3.67	TY-202X	5.10	WLC-26	1.62	Y-46-3	7.57
S-31A	6.85	SR-74K	6.45	SP-52	8.10	T-32X	3.45	TY-54X	5.00	TY-462	16.32	WLC-29	1.85	Y-47	5.98
S-32A	8.82	S-75K	11.32	SP-59	6.88	T-33X	4.90	TY-55X	4.73	TY-468	12.35	WLC-30	1.68	Y-48	6.40
S-34X	4.73	S-76Z	5.23	SP-60	7.00	T-34X	3.19	TY-56X	4.12	TZ-1	4.62	WLC-31	1.88	Y-48-3	7.48
S-35A	8.32	S-77U	11.32	SP-62	6.84	T-35X	3.68	TY-57X	4.55	TZ-2XT	5.83	Y-12	6.52	Y-49	7.68
S-36A	9.32	S-78Z	4.85	SP-63	6.28	T-41X	3.90	TY-58X	4.07	TZ-5	4.98	Y-12-1	7.23	Y-49-1	8.28
S-37X	5.07	S-79Z	5.32	SP-64	6.43	T-42X	3.90	TY-59X	5.83	Y-12-3	3.95	Y-12-3	7.23	Y-49-1	8.94
S-38X	2.15	S-129Z	4.95	SP-65	7.50	T-101X	2.62	TY-60X	4.50	TZ-13	6.17	Y-17	6.33	Y-60-1	11.55
S-38Z	2.15	S-130Z	3.23	SP-66	7.68	T-102X	2.38	TY-61X	2.72	TZ-15	5.00	Y-17-1	7.15	Y-60-2	9.77
S-39X	2.40	S-131X	2.82	SP-67	6.90	TY-1XT	2.10	TY-62X	3.55	TZ-17XT	4.60	Y-17-2	8.55	Y-62	8.94
S-40X	4.60	S-132X	2.93	SP-68	7.95	TY-2Z	2.97	TY-63X	3.82	TZ-24XT	4.98	Y-17-3	7.00	Y-64	7.15
S-41X	2.05	S-133X	5.90	SP-69	7.18	TY-3XT	2.79	TY-64X	5.95	TZ-25	4.27	Y-19	6.78	Y-64-1	9.52
S-41Z	2.05	S-142A	11.17	SP-106	5.83	TY-4XT	2.10	TY-65Z	2.83	TZ-26	3.67	Y-19-1	6.82	Y-70	8.60
S-42A	15.19	S-144A	15.24	SP-107	5.34	TY-16XT	1.35	TY-66A	8.94	TZ-28	3.67	Y-19-3	6.82	Y-70	8.60
SR-45Z	6.79	S-146A	14.84	SP-108	5.90	TY-17XT	1.23	TY-67A	9.24	TZ-29XT	4.77	Y-20	6.78	Y-70-1	9.52
S-46A	9.64	S-149A	22.62	SP-117	4.88	TY-23X	5.00	TY-68S	5.50	TZ-32XT	5.02	Y-20-2	7.35	Y-72-1	9.32
S-47Z	3.87	S-154A	23.82	SP-118	5.68	TY-24X	3.23	TY-69S	9.49	TZ-103XT	3.00	Y-20-3	6.27	Y-81-3	10.02
S-48X	2.00	S-156A	16.50	SP-128	4.48	TY-25X	6.22	TY-70S	10.44	V-21	5.23	Y-21	6.77	Y-82-1	7.60
S-49X	2.12	S-158A	32.74	SP-310	.84	TY-26X	5.22	TY-71S	9.19	V-21B	5.39	Y-21-1	6.93	Y-83-1	9.25
S-50X	2.27	SP-4	8.17	SX-201	7.44	TY-28XT	4.28	TY-74S	8.94	V-21K	9.19	Y-21-3	7.05	Y-83-1	.60
S-51X	3.77	SP-5	8.12	SX-202	7.41	TY-27XT	4.12	TY-75A	12.82	V-21Z	5.38	Y-22	6.78	Y-110	.75
S-52X	4.38	SP-5	8.12	SX-203	7.26	TY-29X	3.68	TY-76A	9.60	V-23	5.50	Y-22-1	7.23	Y-111	.75
S-53X	3.93	SP-7	7.50	SX-204	7.44	TY-30X	2.98	TY-78	14.72	V-23B	6.65	Y-22-3	6.78	Y-112	.75
S-54X	4.52	SP-11	7.00	SX-205	7.50	TY31X	2.73	TY-79	15.34	V-23K	8.34	Y-24	6.57	Y-300-1	23.10
S-55X	4.17	SP-15	7.48	SX-206	7.59	TY-32X	2.95	TY-80	15.94	V-23Z	5.67	Y-24-3	7.00	Y-101	9.50
S-55Z	4.12	SP-20	7.27	SX-207	7.62	TY-33X	3.90	TY-81	15.19	VR-30Z	4.15	Y-25	5.83	Y-102-2	9.80
S-56Z	5.27	SP-21	7.48	SX-208	7.50	TY-34X	3.12	TY-82	15.27	V-31	4.47	Y-25-1	6.45	Y-103-1	11.00
S-57Z	5.39	SP-21	7.48	T-1X	4.98	TY-35X	3.17	TY-83	18.34	V-31K	6.96	Y-25-3	6.33	13500	6.85
S-58X	2.50	SP-22	7.77	T-2X	3.95	TY-36X	3.33	TY-84	15.84	WC-13	1.32	Y-26-2	6.68	13510	6.85
S-59Z	5.72	SP-29	7.50	T-3X	4.55	TY-37X	3.99	TY-85	28.20	WLC-3	1.33	Y-28	6.62	13750	3.92
S-60A	10.24	SP-32	6.34	T-5X	4.07	TY-38X	3.99	TY-86	19.75	WLC-4	1.32	Y-28-3	6.78	13751	3.92
S-61Z	5.39	SP-33	6.82	T-11X	3.57	TY-39X	5.15	TY-88	11.10	WLC-5	1.33	Y-30G	8.94	13800	1.40
S-62X	4.17	SP-34	6.55	T-12X	3.88	TY-40X	3.75	TY-89	13.72	WLC-6	1.32	Y-31G	8.94	13801	1.40
S-63X	3.05	SP-35	6.65	T-13X	3.72	TY-41X	3.84	TY-90	16.00	WLC-7	1.35	Y-40	6.78		
						TL-42X	4.40	TY-91	15.60	WLC-8	1.80	Y-40-3	7.65		

Discontinued item. Available until supply is exhausted

### TRIAD CASES

GB	HA	HB	JA	JB	KA	KB	LA	LB	MA	MB	NA	NB	AH	AJ	EA	EB	FA	FB	GA	
A	2 3/8	2 5/8	2 3/4	3 1/8	3 1/4	3 3/8	3 1/8	3 1/4	4	4	4 1/8	4 1/4	A	1 3/8	1 5/8	1 3/4	1 3/8	2 1/8	2 1/4	2 3/8
B	2 3/4	3 1/8	3 1/4	3 3/8	3 3/4	3 1/2	B	4 1/8	4 3/8	4 1/4	4 1/8	5 1/8	B	1 3/8	1 5/8	1 3/4	1 3/8	2 1/8	2 1/4	2 3/8
C	2 1/2	2 3/4	2 3/8	3 1/8	3 1/4	3 3/8	C	5 1/8	4 1/2	6	4 1/8	6 1/8	C	1 3/4	2 3/8	2 3/4	2 1/8	3 1/8	2 1/2	3 1/8
D	2 1/8	2 1/4	2 1/8	2 3/8	2 3/4	3	D	3 3/8	3 3/8	3 1/4	3 1/8	4 1/8	D	1 1/4	1 3/8	1 3/8	1 3/8	1 1/8	1 1/4	2 1/8
E	1 3/4	1 5/8	1 3/4	2 1/8	2 1/4	2 3/8	E	2 1/8	2 1/8	3	3	3 3/8	E		1 3/8	1 1/4	1 1/4	1 3/8	1 3/8	1 3/4
G	3/8	3/8	3/8	3/8	3/8	1/2	G	1/2	1/2	5/8	5/8	5/8	G	3/8	3/8	3/8	3/8	3/8	3/8	3/8
I	6-32	8-32	8-32	8-32	8-32	10-32	I	10-32	10-32	1/4-20	1/4-20	1/4-20	I	6-32	6-32	6-32	6-32	6-32	6-32	6-32
Wt. (avg.) lbs.	1 3/4	2 1/2	2 1/4	4 1/2	4	7 3/4	Wt. (avg.) lbs.	9 3/4	8 1/2	13 1/2	12 1/2	18	Wt. (avg.) lbs.	4 oz.	9 oz.	1	15 oz.	1 3/4	1 1/2	2
AF	AG	AH-2	AJ-2	JZ*†	GP-1	GP-2	GP-3	GP-4	GP-5	JOA	JOB									
A	3/4	1	1-5/16	1-5/8	9/16 dia.	A	7/8	1 1/8	1 1/4	1 3/8	1 5/8	A	1 5/8 dia.	1 5/8 dia.						
B	3/4	1	1-5/16	1-5/8	Round	B	1 1/8	1 1/4	1 1/2	1 3/4	2	B	Round	Round						
*†Bw	1-3/64	1-3/32	1-11/32	Bw	1 1/8	1 1/32	1 1/8	C	1 1/8	2 1/4	2 3/8	2 1/2	2 3/4	C	1 1/32	1 1/32				
C	1-1/8	1-3/8	1-3/4	2-3/8	25/32	C	1 1/8	2 1/4	2 3/8	2 1/2	2 3/4	D	3/8	3/8						
D	*27/32	*1-1/32	*1-11/32	*1-5/8	D	1 3/32	1 3/8	1 1/2	1 1/2	1 1/2	F	7/8	7/8							
F	5/8	3/4	7/8	7/8	F	3/4	3/4	1 1/8	1 1/8	1 1/8	Unit Wt.	2 oz.	2 1/2 oz.							
I	4/40	6/32	6/32	6/32	Wt.	3 oz.	5 1/2 oz.	8 oz.	12 oz.	17 oz.										
Unit	1-1/4	2-1/2	5-1/4	11	.5															
Wt.	oz.	oz.	oz.	oz.	oz.															

\* Not in conformance with MIL-T-27A.  
† Not in conformance with MIL-T-27

### SHIELDING

- P-1—One nickel alloy high permeability shield — 45db. reduction in pickup.
- P-3—Two nickel alloy shields interleaved with one heavy copper shading ring — 70db. reduction in pickup.
- P-5—Three nickel alloy shields interleaved with two heavy copper shading rings— 95 db. reduction in pickup.

Prices subject to change without notice. Net prices shown for 1-9 quantity. For 1 to 249 pieces, see your stocking Triad Distributor for quantity discount schedule. For 250 or more pieces, contact your Triad Representative or call the factory.